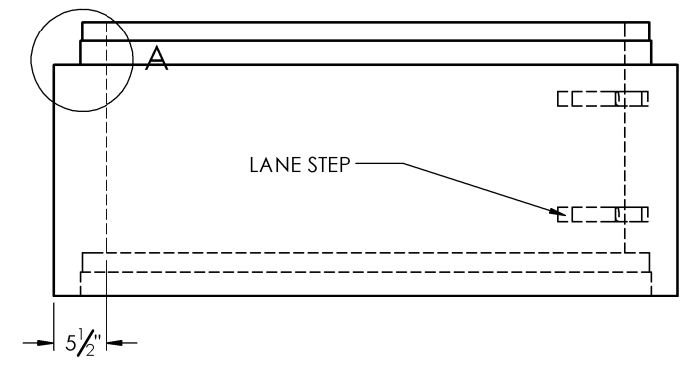
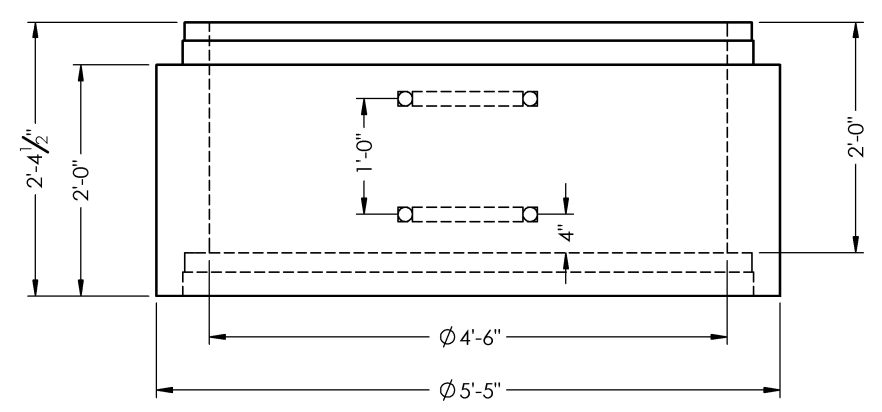
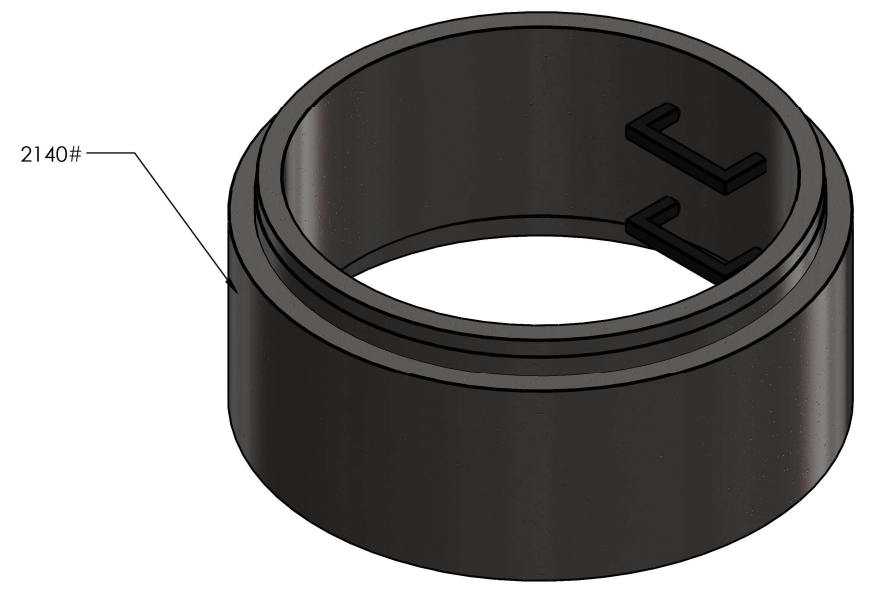
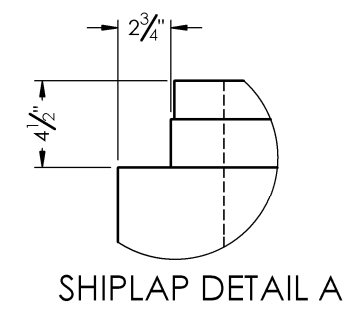
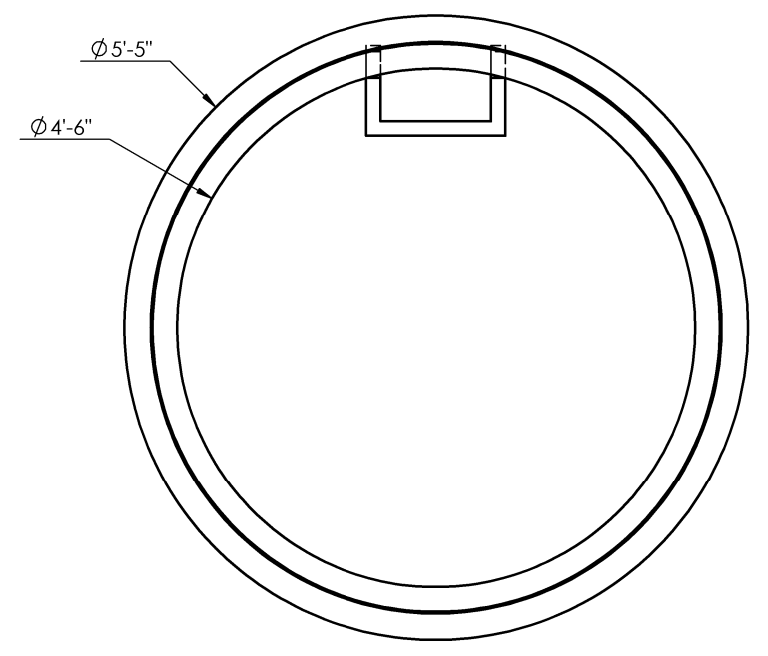


8 7 6 5 4 3 2 1

D
C
B
A



NOTES:
REINFORCEMENT:
-4x8 W4/W1.7 WIRE MESH THROUGHOUT



2215 E. BROOKLYN AVE
SPOKANE, WA 99217
TOLL FREE 1-800-888-4573
(509) 325-4573 FAX (509) 325-5098
SPOKANE - LEWISTON - YAKIMA
www.wilbertprecast.com

TITLE: Ø54" 2'-0" RISER

REV: A	SIZE	DWG. NO.	SCALE:	DATE:
DRAWN FOR:	B	542R	NTS	11/12/2020
DRAWN BY: DCR				

8 7 6 5 4 3 2 1