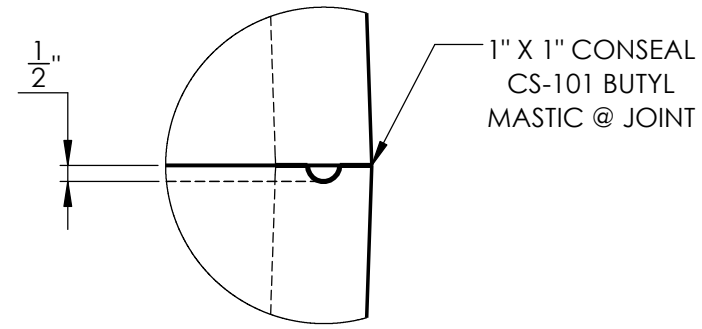
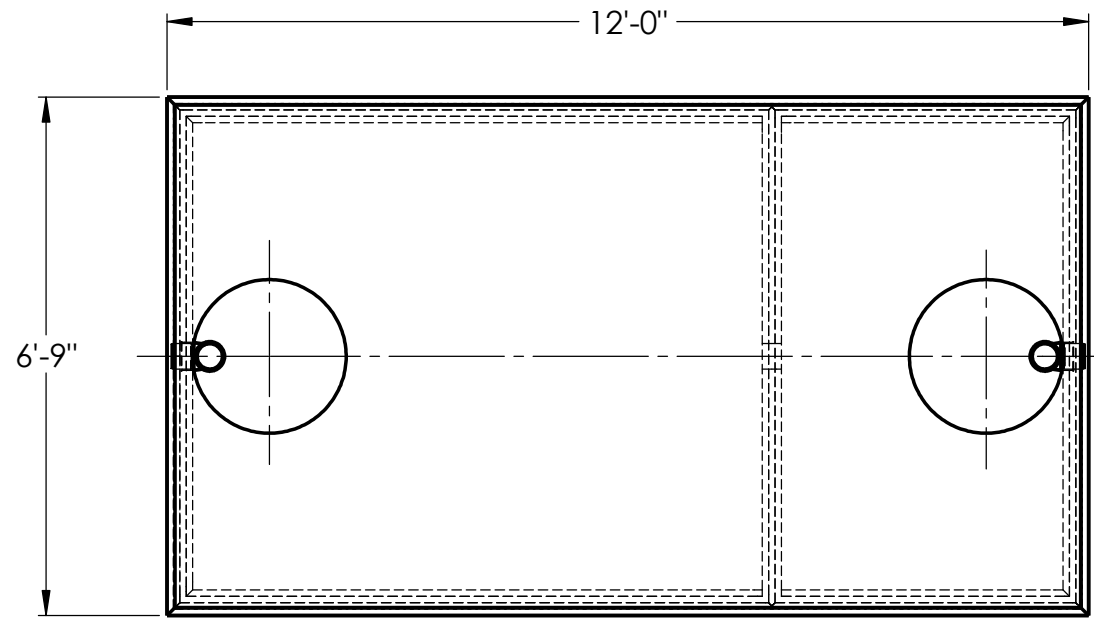


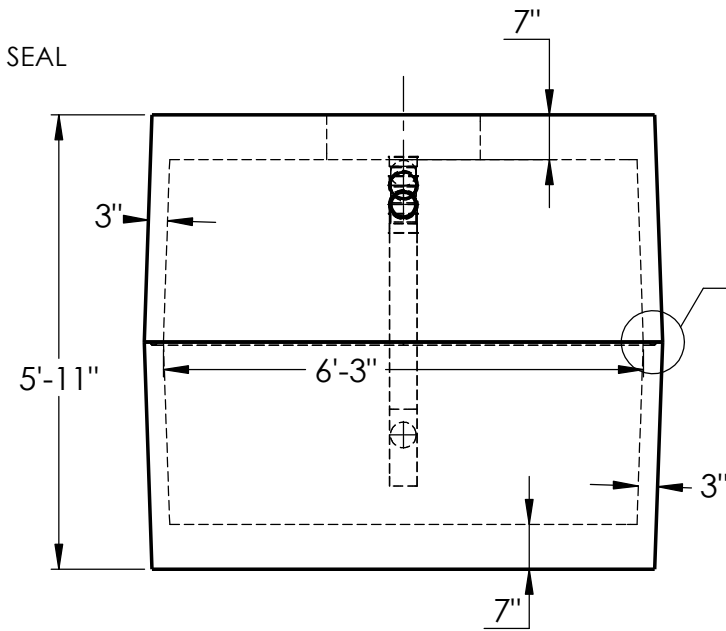
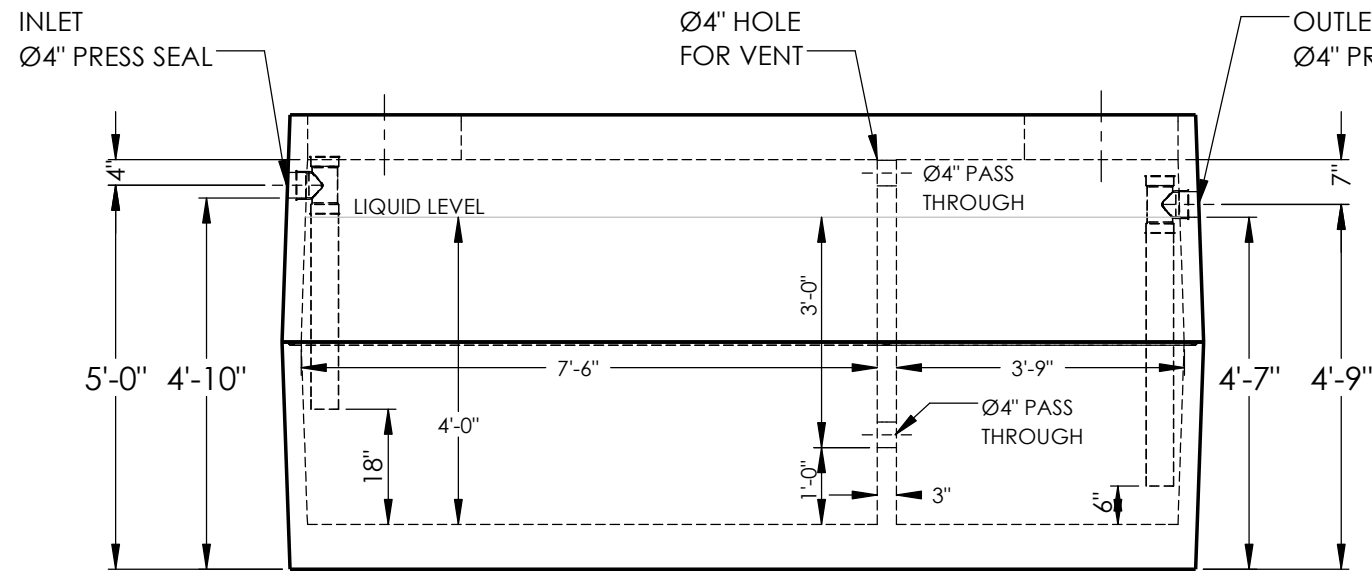
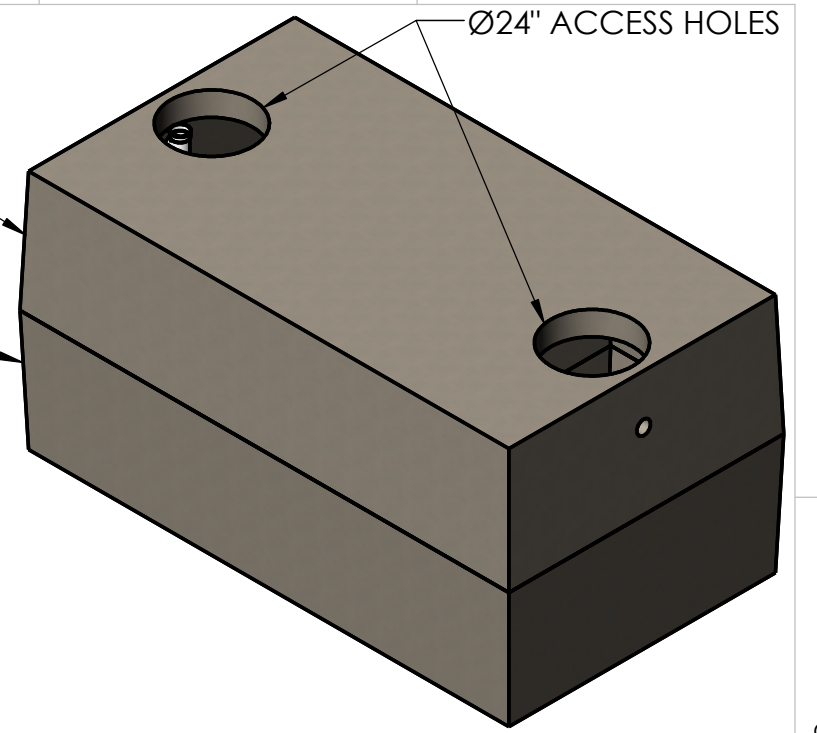
WARRANTY: ALL TANKS MUST BE BACKFILLED AND COMPACTED PRIOR TO FILLING OR WARRANTY IS VOID.



JOINT DETAIL A

LID  
10,016#

BASE  
10,536#



**CONCRETE:**

TANK CONSTRUCTION UTILIZES 4000 PSI CONCRETE AND GRADE 60 REBAR.

**GALLON CALCS:**

6'-3"W x 7'-6"L x 4'-0"H x 7.48 = 1402 GALLONS  
6'-3"W x 3'-9"L x 4'-0"H x 7.48 = 701 GALLONS

**RISERS:**

PVC: Ø24" & FIB. COVER (TO GRADE)  
CONCRETE: Ø24" x 8" OR 12" (6" BELOW GRADE)

**BEDDING:**

4" PEA GRAVEL OR COMPACTED CRUSHED GRAVEL (NO WATER PRESENT)

**EXCAVATION:**

12" LARGER EACH WAY THAN TANK DIM.  
MAX COVER ON TOP 5'-0"

**NOTES:**

REINFORCEMENT:  
-#4 U-BARS @ 5" O.C.E.W. IN TOP, (2) #4 EACH SIDE OF ACCESS  
-#4 BARS @ 5" O.C.E.W. IN SIDES  
-#4 U-BARS @ 5" O.C.E.W. IN BOTTOM



2215 E. BROOKLYN AVE  
SPOKANE, WA 99217  
TOLL FREE 1-800-888-4573  
(509) 325-4573 FAX (509) 325-5098  
SPOKANE - LEWISTON - YAKIMA  
www.wilbertprecast.com

**TITLE:**

2000 GALLON DOUBLE COMPARTMENT  
2-PIECE OIL/WATER SEPARATOR HEAVY

**SIZE**

**B**

**DWG. NO.**

#1638OWTB 4"

**SCALE:**

NTS

**DATE:**

6/12/2018

DRAWN BY:  
CEB