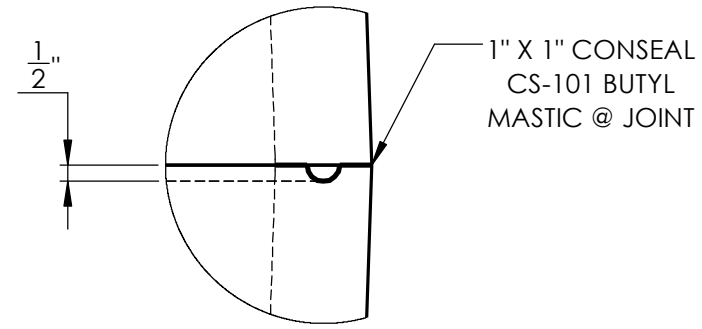
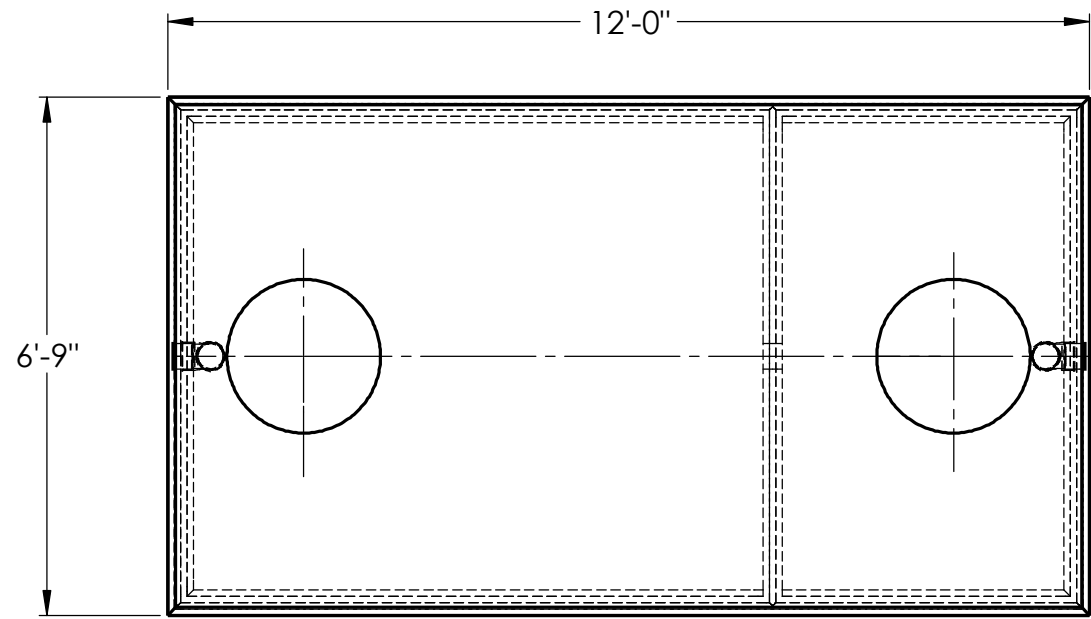
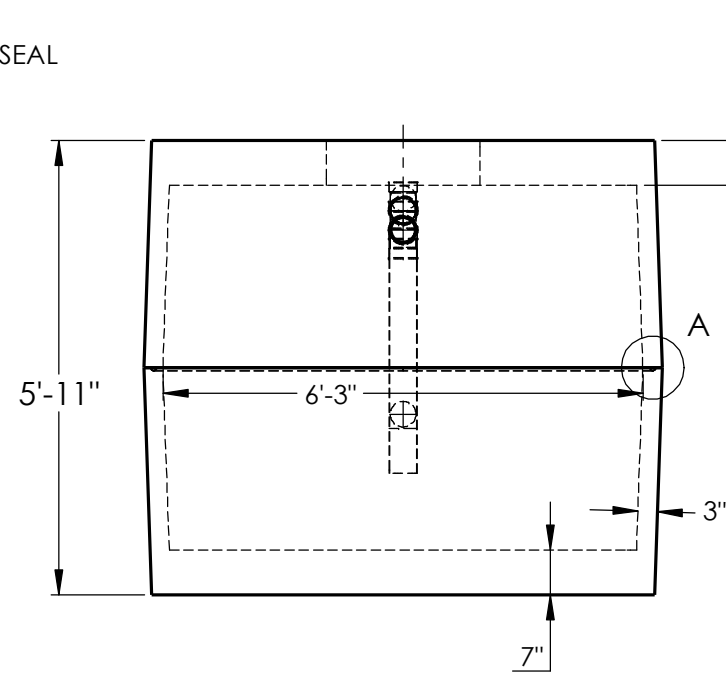
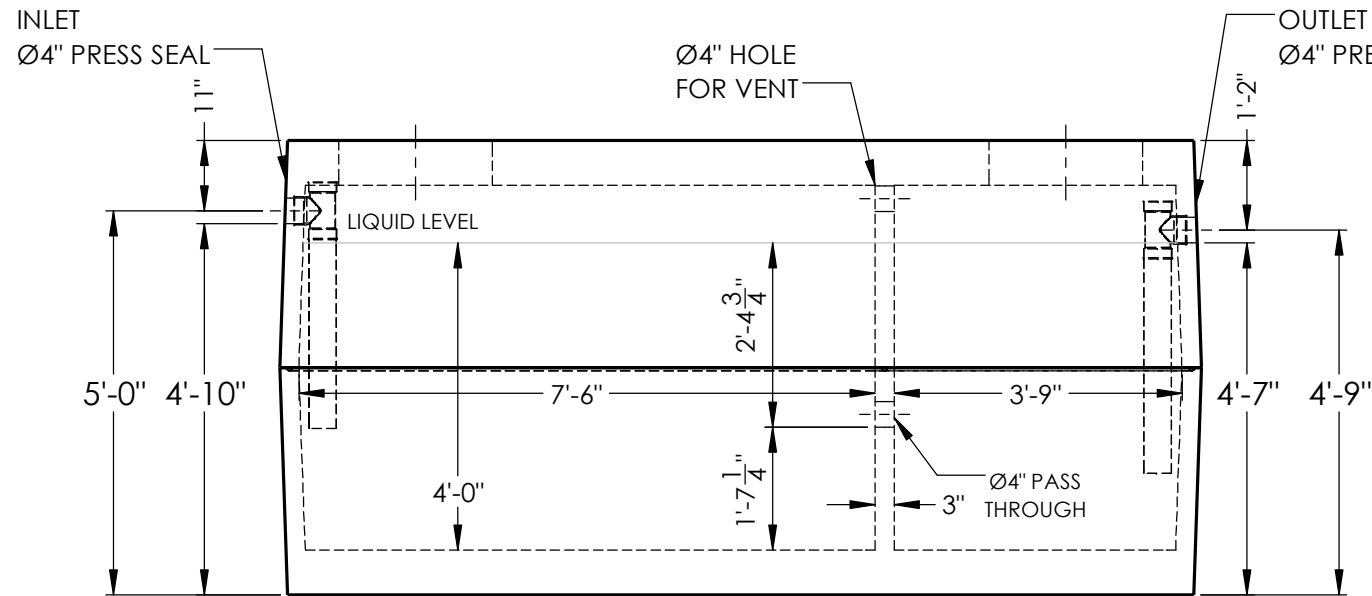
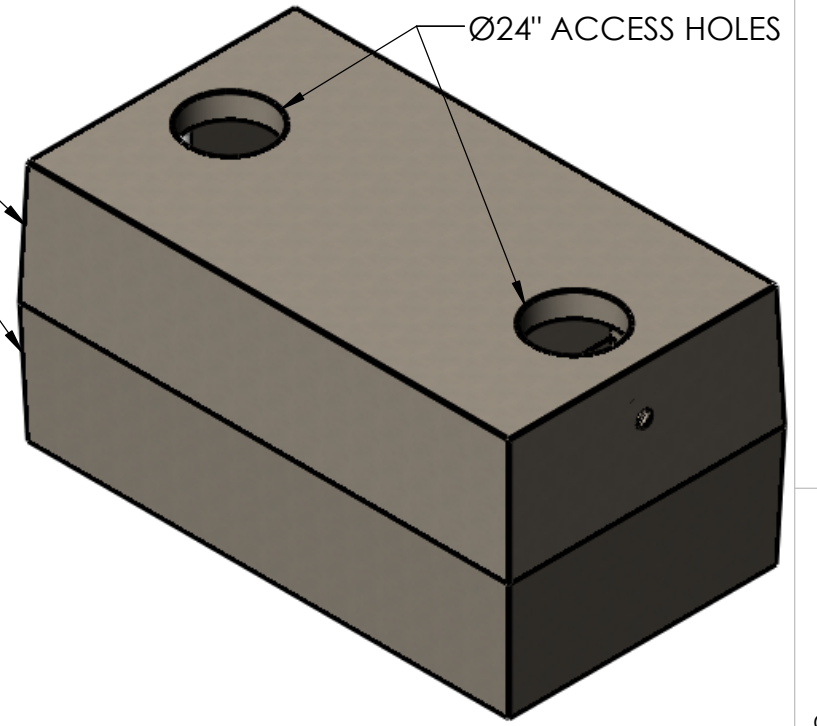


8 7 6 5 4 3 2 1



JOINT DETAIL A



- CONCRETE:**  
TANK CONSTRUCTION UTILIZES 4000 PSI CONCRETE AND GRADE 60 REBAR.
- GALLON CALCS:**  
6'-3"W x 7'-6"L x 4'-0"H x 7.48 = 1402 GALLONS  
6'-3"W x 3'-9"L x 4'-0"H x 7.48 = 701 GALLONS
- RISERS:**  
PVC: Ø24" & FIB. COVER (TO GRADE)  
CONCRETE: Ø24" x 8" OR 12" (6" BELOW GRADE)
- BEDDING:**  
4" PEA GRAVEL OR COMPACTED CRUSHED GRAVEL (NO WATER PRESENT)
- EXCAVATION:**  
12" LARGER EACH WAY THAN TANK DIM.  
MAX COVER ON TOP 5'-0"

**NOTES:**  
REINFORCEMENT:  
-#4 U-BARS @ 5" O.C.E.W. IN TOP, (2) #4 EACH SIDE OF ACCESS  
-#4 BARS @ 5" O.C.E.W. IN SIDES  
-#4 U-BARS @ 5" O.C.E.W. IN BOTTOM



2215 E. BROOKLYN AVE  
SPOKANE, WA 99217  
TOLL FREE 1-800-888-4573  
(509) 325-4573 FAX (509) 325-5098  
SPOKANE - LEWISTON - YAKIMA  
www.wilbertprecast.com

TITLE:		2000 GALLON DOUBLE COMPARTMENT 2-PIECE SEPTIC TANK HEAVY	
SIZE	DWG. NO.	SCALE:	DATE:
<b>B</b>	#1638TB	NTS	12/24/2019

DRAWN BY:  
DCR

8 7 6 5 4 3 2 1