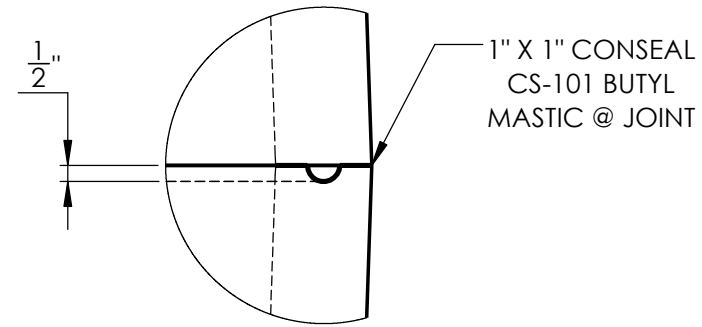
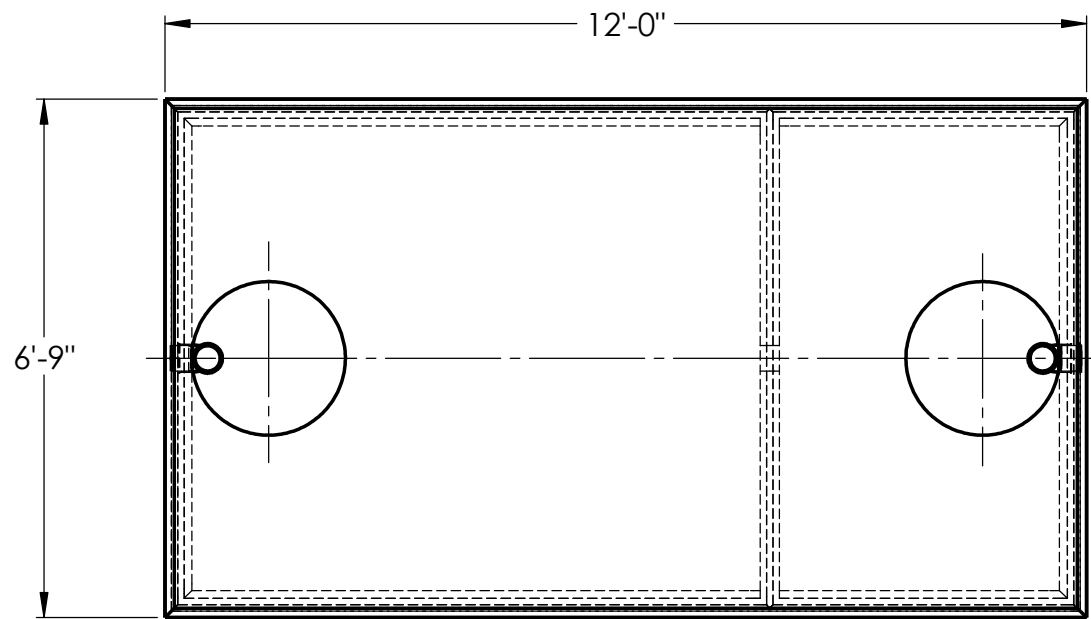
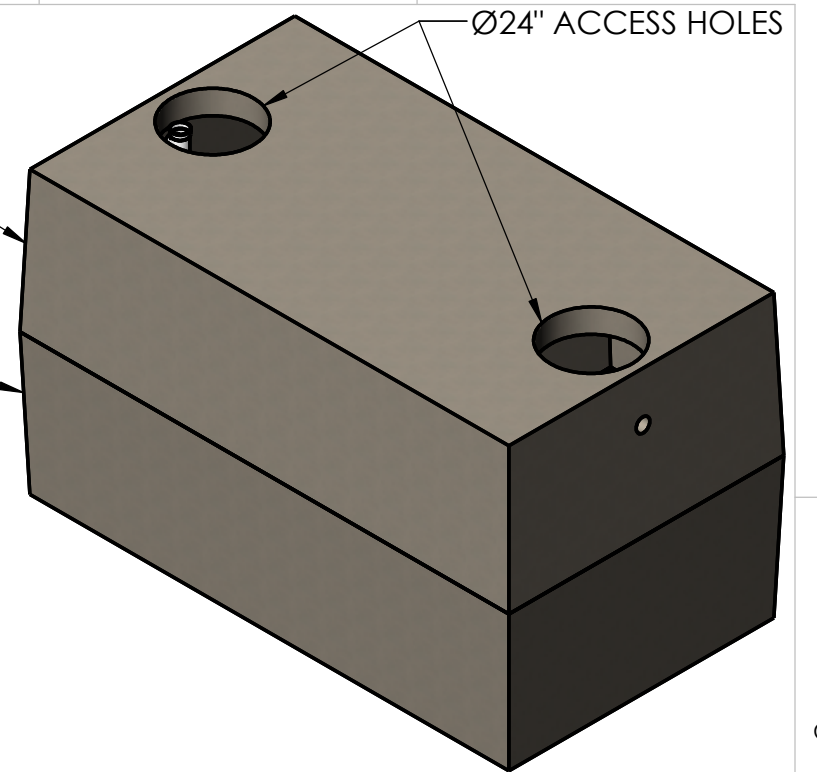


WARRANTY: ALL TANKS MUST BE BACKFILLED AND COMPACTED PRIOR TO FILLING OR WARRANTY IS VOID.



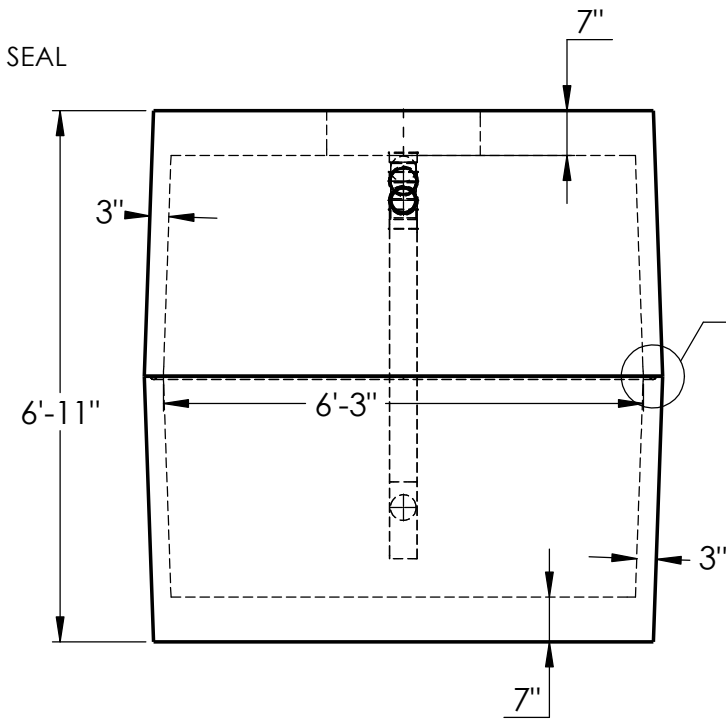
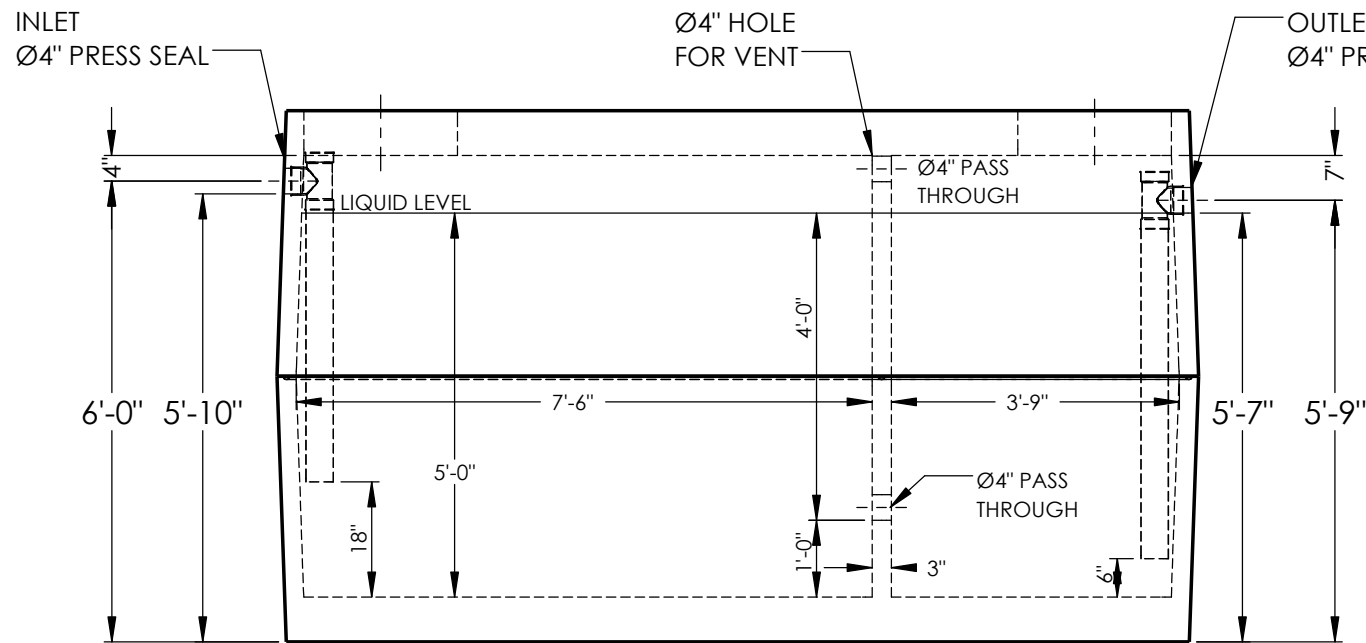
JOINT DETAIL A



LID
10,745#

BASE
11,265#

1" X 1" CON SEAL
CS-101 BUTYL
MASTIC @ JOINT



CONCRETE:
TANK CONSTRUCTION UTILIZES 4000 PSI
CONCRETE AND GRADE 60 REBAR.

GALLON CALCS:
6'-3"W x 7'-6"L x 5'-0"H x 7.48 = 1753 GALLONS
6'-3"W x 3'-9"L x 5'-0"H x 7.48 = 877 GALLONS

RISERS:
PVC: Ø24" & FIB. COVER (TO GRADE)
CONCRETE: Ø24" x 8" OR 12" (6" BELOW GRADE)

BEDDING:
4" PEA GRAVEL OR COMPACTED CRUSHED GRAVEL
(NO WATER PRESENT)

EXCAVATION:
12" LARGER EACH WAY THAN TANK DIM.
MAX COVER ON TOP 5'-0"

NOTES:

REINFORCEMENT:
-#4 U-BARS @ 5" O.C.E.W. IN TOP, (2) #4 EACH
SIDE OF ACCESS
-#4 BARS @ 5" O.C.E.W. IN SIDES
-#4 U-BARS @ 5" O.C.E.W. IN BOTTOM



2215 E. BROOKLYN AVE
SPOKANE, WA 99217
TOLL FREE 1-800-888-4573
(509) 325-4573 FAX (509) 325-5098
SPOKANE - LEWISTON - YAKIMA
www.wilbertprecast.com

DRAWN BY:
CEB

TITLE:

2500 GALLON DOUBLE COMPARTMENT
2-PIECE OIL/WATER SEPARATOR HEAVY

SIZE

B

DWG. NO.

#1641OWTB 4"

SCALE:

NTS

DATE:

6/12/2018