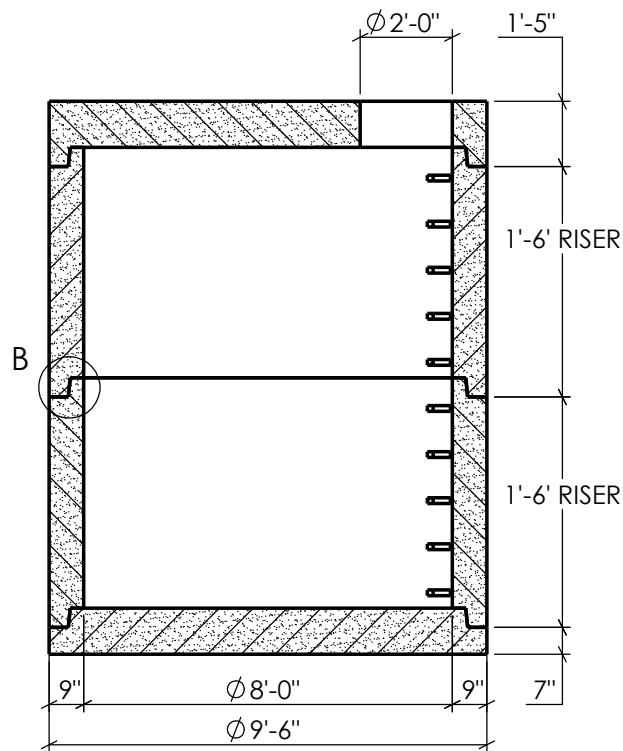


JOINT DETAIL B



SECTION A-A

- PRODUCT #'S**
FLAT SLAB TOP
 960F - 10,940#
RISERS
 961 - 1' - 3,092#
 962 - 2' - 6,183#
 963 - 3' - 9,275#
 964 - 4' - 12,366#
 965 - 5' - 15,456#
 966 - 6' - 18,548#
BASE SLAB
 960B - 9,854#

NOTES:
 REINFORCEMENT:
BODY & RISERS
 -2X8 W4/W2.1 WIRE CAGE THROUGHOUT
BASE
 -#6 BAR @ 6" O.C.
FLAT SLAB TOP
 -#6@7"O.C. W/EXTRA #6 BAR AROUND OPENING
 ~ALL UNITS MEET OR EXCEED THE REQUIREMENTS OF
 ASTM C-478/AASHTO M-199 & ASTM C-443



2215 E. BROOKLYN AVE
SPOKANE, WA 99217
TOLL FREE 1-800-888-4573
(509) 325-4573 FAX (509) 325-5098
SPOKANE - LEWISTON - YAKIMA
www.wilbertprecast.com

DRAWN BY:
CEB

TITLE: Ø96" MANHOLE

SIZE B	DWG. NO. 960	SCALE: NTS	DATE: 12/5/2018
-------------------------	-------------------------------	----------------------	---------------------------