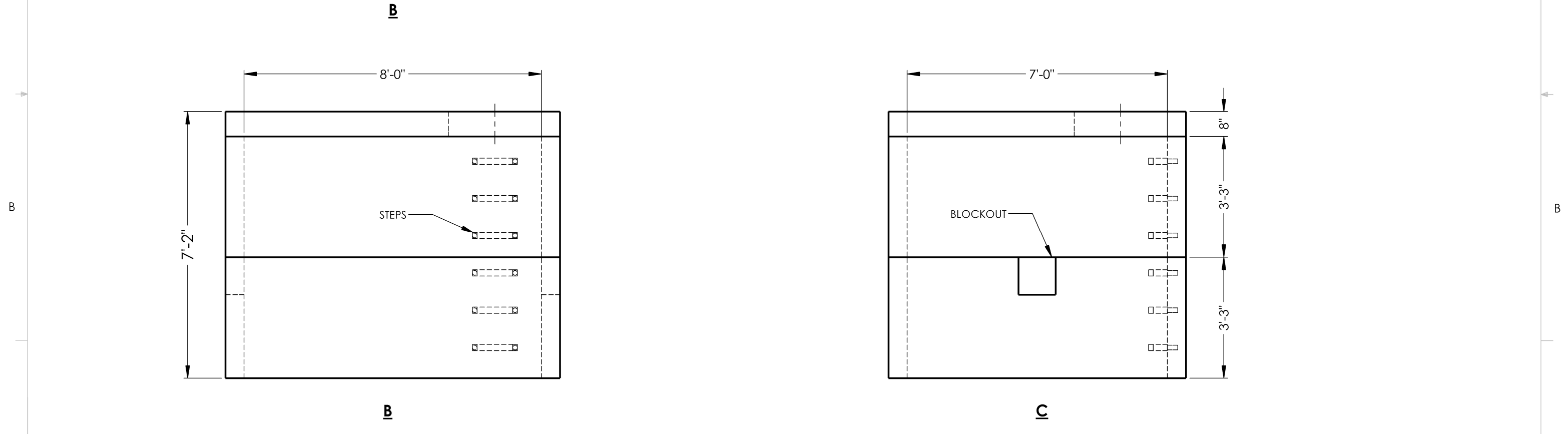


8 7 6 5 4 3 2 1



REINFORCEMENT:

-LID	#5 BAR @ 5" O.C. TRANSVERSE #5 BAR @ 5" O.C. LONGITUDINAL (CENTERED IN LID)
-WALLS	#4 BAR @ 9" O.C. VERTICAL #5 BAR @ 6" HORIZONTAL (2" CLR FROM INSIDE)
****HS-20 LOADING MAX BURY DEPTH (5'-0") AS PER "AASHTO" STANDARDS****	



**2215 E. BROOKLYN AVE
SPOKANE, WA 99217
TOLL FREE 1-800-888-4573
(509) 325-4573 FAX (509) 325-5098
SPOKANE - LEWISTON - YAKIMA
www.wilbertprecast.com**

TITLE:		METER VAULT 7'-0" X 8'-0" HS-20 LOADING	
SIZE	DWG. NO.	SCALE:	DATE:
B	WIL708	NTS	10/1/2020

DRAWN BY:
DCR

8 7 6 5 4 3 2 1