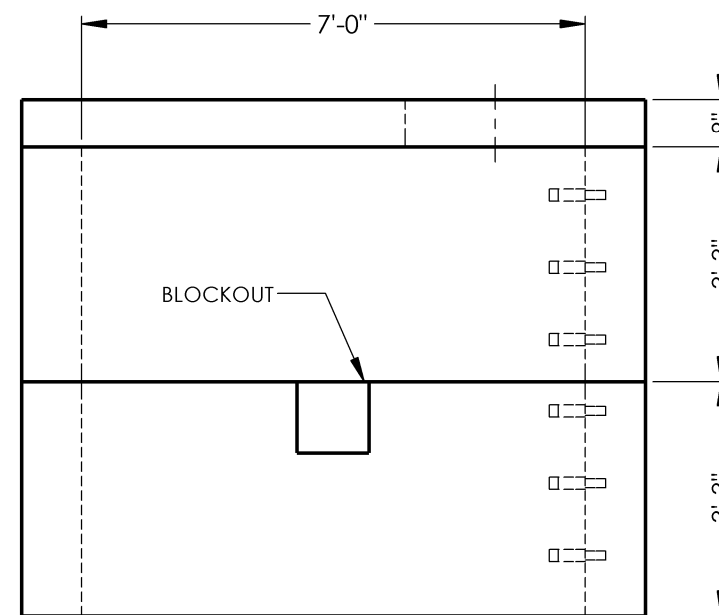
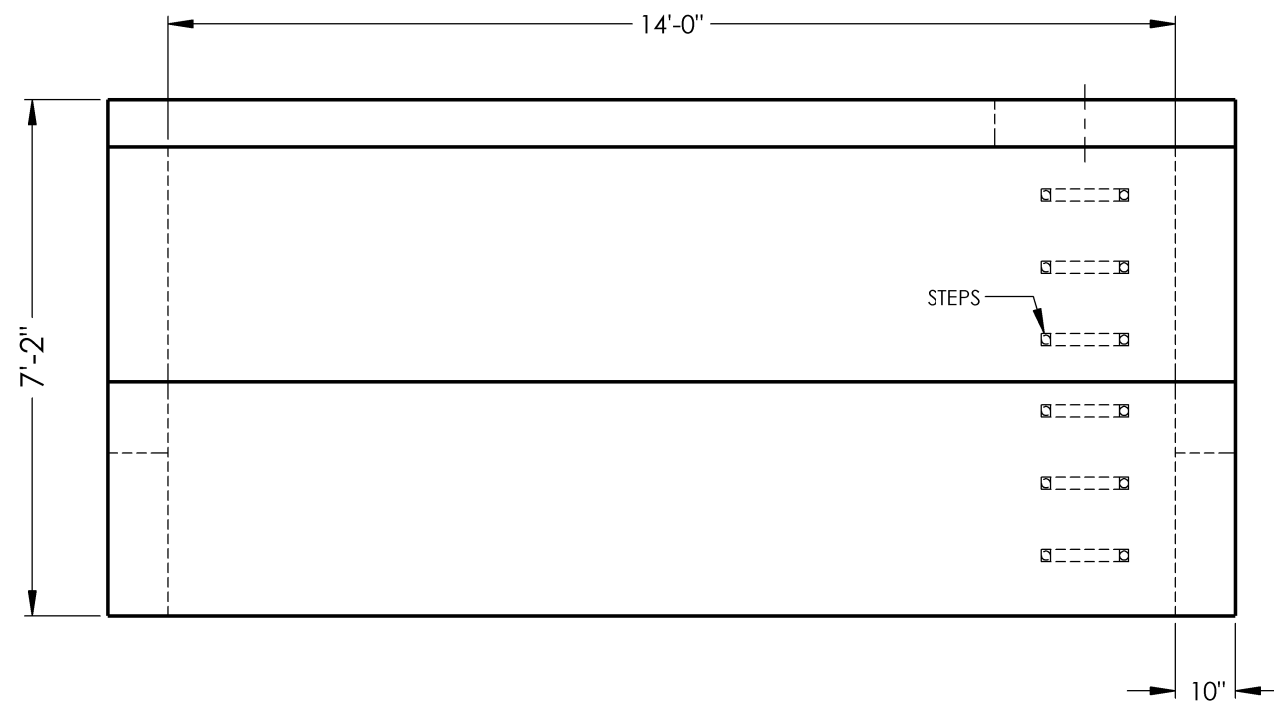
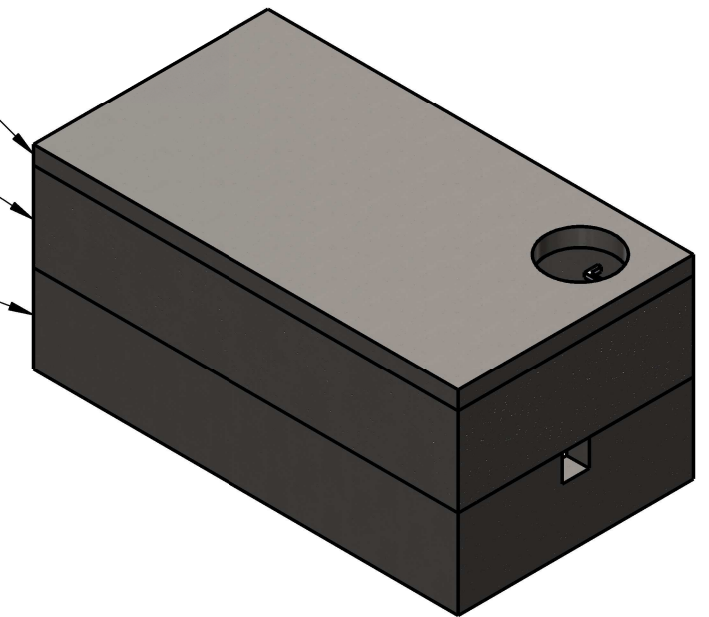


WIL714T
13,090#

WIL714W-39
18,420#

WIL714W-39
18,170#



B

C

REINFORCEMENT:

-LID -#5 BAR @ 5" O.C. TRANSVERSE
-#5 BAR @ 8" O.C. LONGITUDINAL
(CENTER IN LID)

-WALLS -#4 BAR @ 12" O.C.E.F. VERTICAL
(DOUBLE MAT) -#5 BAR @ 8" O.C.E.F. HORIZONTAL
(1/2" CLR TYP)

******HS-20** LOADING MAX BURY (5'-0") AS PER
"AASHTO" STANDARDS****



2215 E. BROOKLYN AVE
SPOKANE, WA 99217
TOLL FREE 1-800-888-4573
(509) 325-4573 FAX (509) 325-5098
SPOKANE - LEWISTON - YAKIMA
www.wilbertprecast.com

DRAWN BY:
DCR

TITLE:

METER VAULT 7'-0" X 14'-0"
HS-20 LOADING

SIZE

B

DWG. NO.

WIL714

SCALE:

NTS

DATE:

10/2/2020