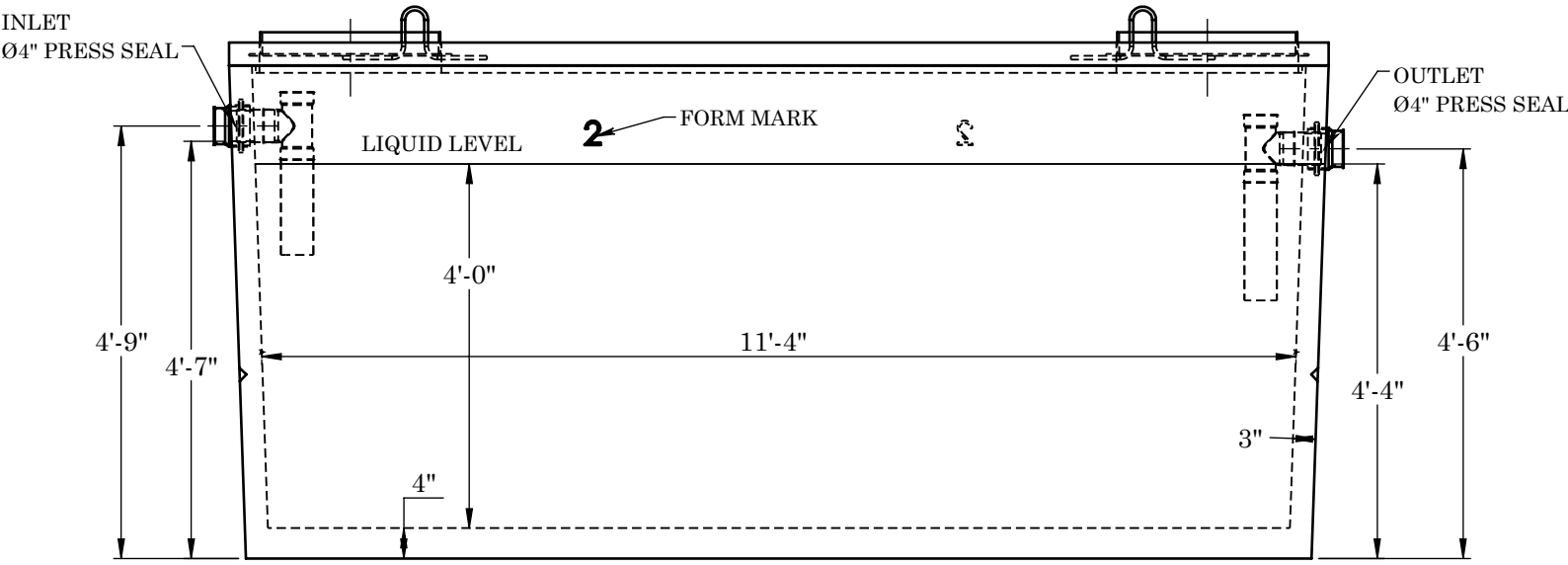
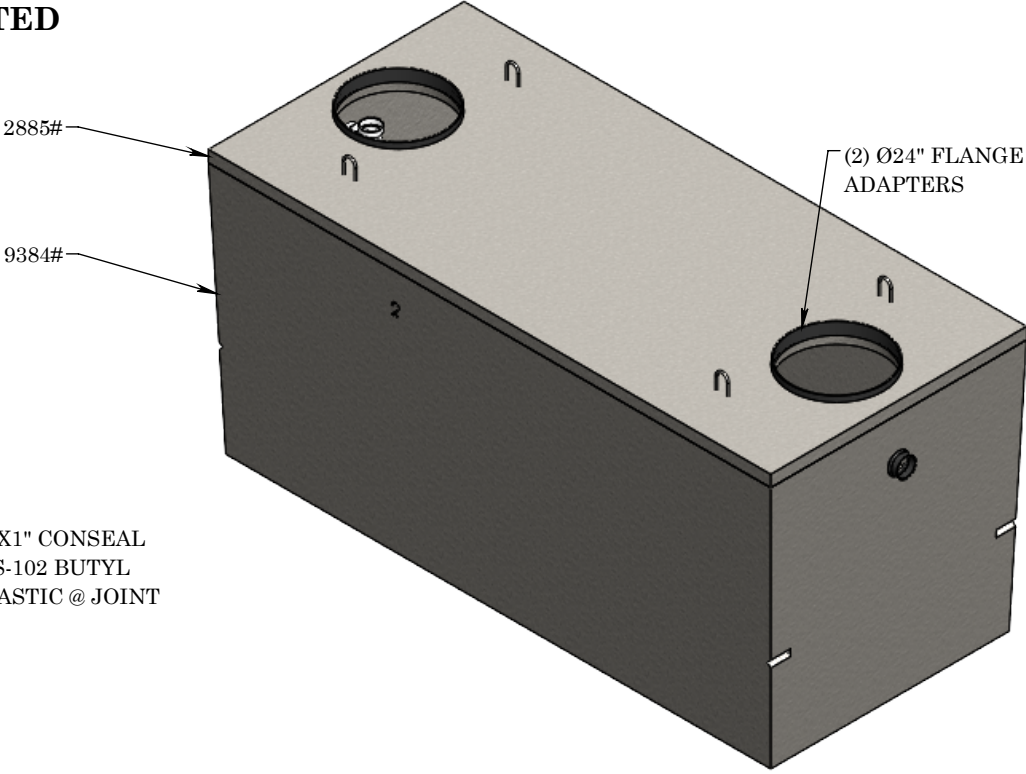
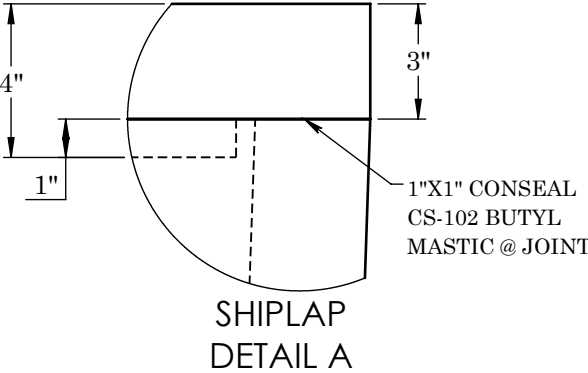
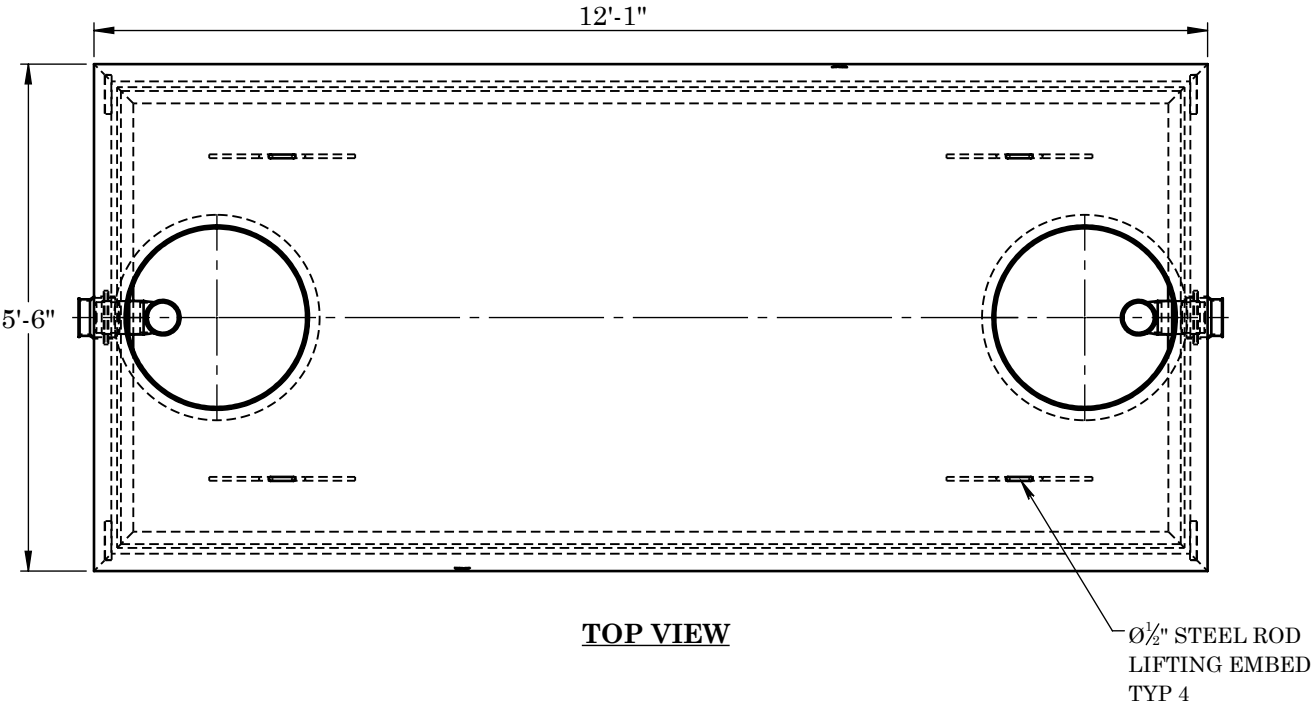
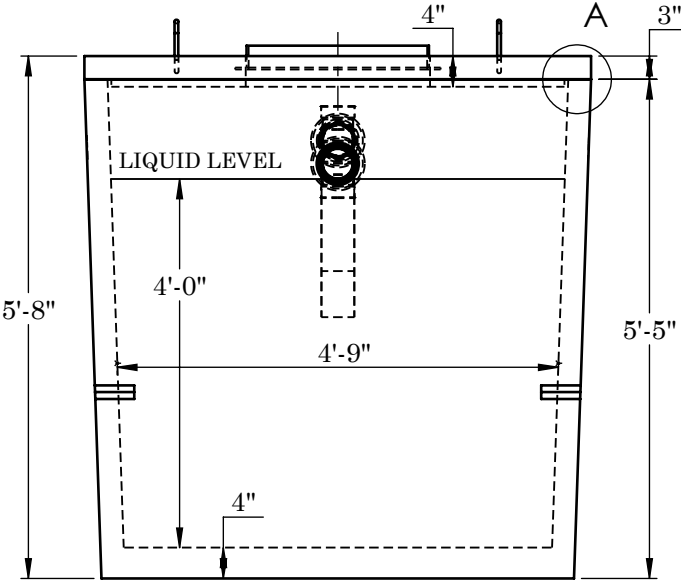


WARRANTY - ALL TANKS MUST BE BACKFILLED AND COMPACTED
PRIOR TO FILLING OR WARRANTY IS VOID



FRONT VIEW



SIDE VIEW

CONCRETE:
TANK CONSTRUCTION UTILIZES 6000 PSI
CONCRETE AND GRADE 60 REBAR

GALLON CALCS:
4'-9"W X 11'-4"L X 4'-0"H X 7.48 = 1610 GALLONS

RISERS:
PVC: Ø24" RISER AND FIBER COVER(TO GRADE)
CONCRETE: Ø24" X 8" OR 12" (6" BELOW GRADE)

BEDDING:
4" PEA GRAVEL (NO WATER PRESENT)

EXCAVATION:
12" LARGER THAN TANK DIMENSIONS
EACH WAY. MAX BURY 3'-0"

REINFORCEMENT:

-LID
-#4 BAR @ 6" O.C.E.W.
-(2) #4 BARS X CONT. EACH SIDE OF ACCESS

-BASE
-CF 6X6 W1.4/W1.4 WELDED WIRE MESH IN
WALLS 12" UP FROM BOTTOM
-#3 L PERIMETER BARS 12" DOWN FROM TOP
OF BASE



2215 E. BROOKLYN AVE
SPOKANE, WA 99217
TOLL FREE 1-800-888-4573
(509) 325-4573 FAX (509) 325-5098
SPOKANE - LEWISTON - YAKIMA
www.wilbertprecast.com

TITLE:
1500 GALLON SINGLE COMPARTMENT
MONO SEPTIC TANK

SIZE	DWG. NO.	SCALE:	DATE:
B	#1611M2F	NTS	7/31/2025