

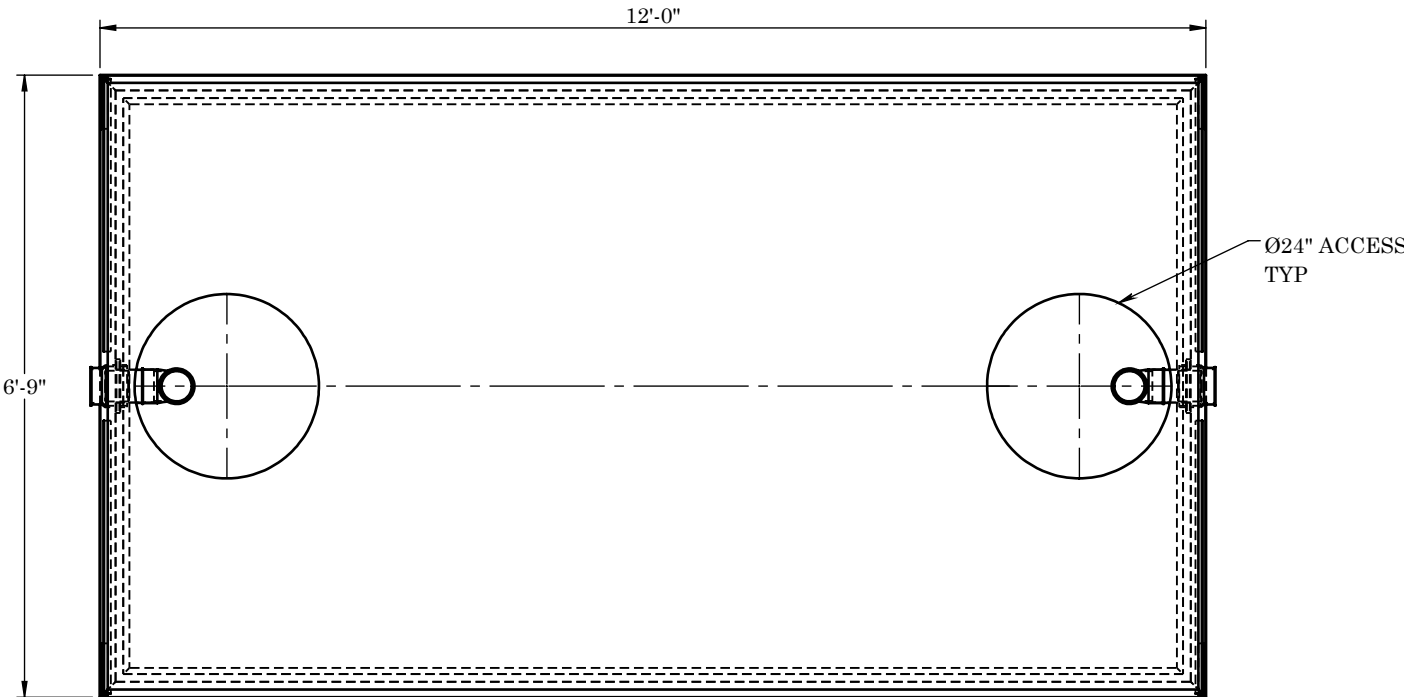
WARRANTY: ALL TANKS MUST BE BACKFILLED AND COMPACTED
PRIOR TO FILLING OR WARRANTY IS VOID

D

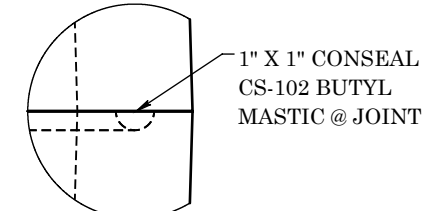
C

B

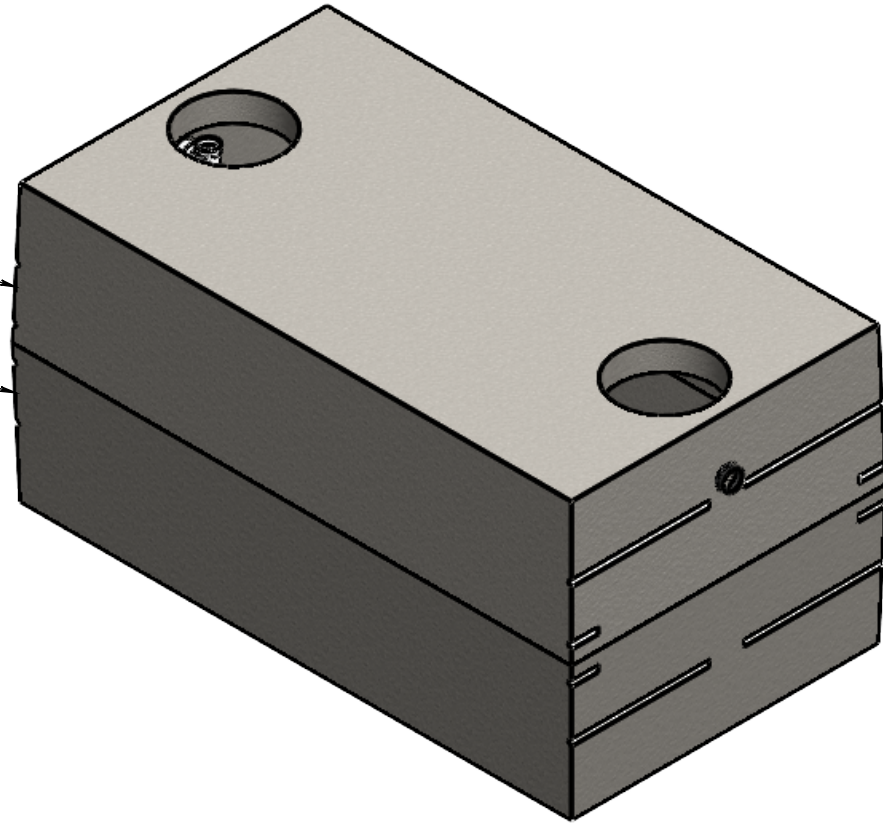
A



TOP VIEW



JOINT DETAIL B

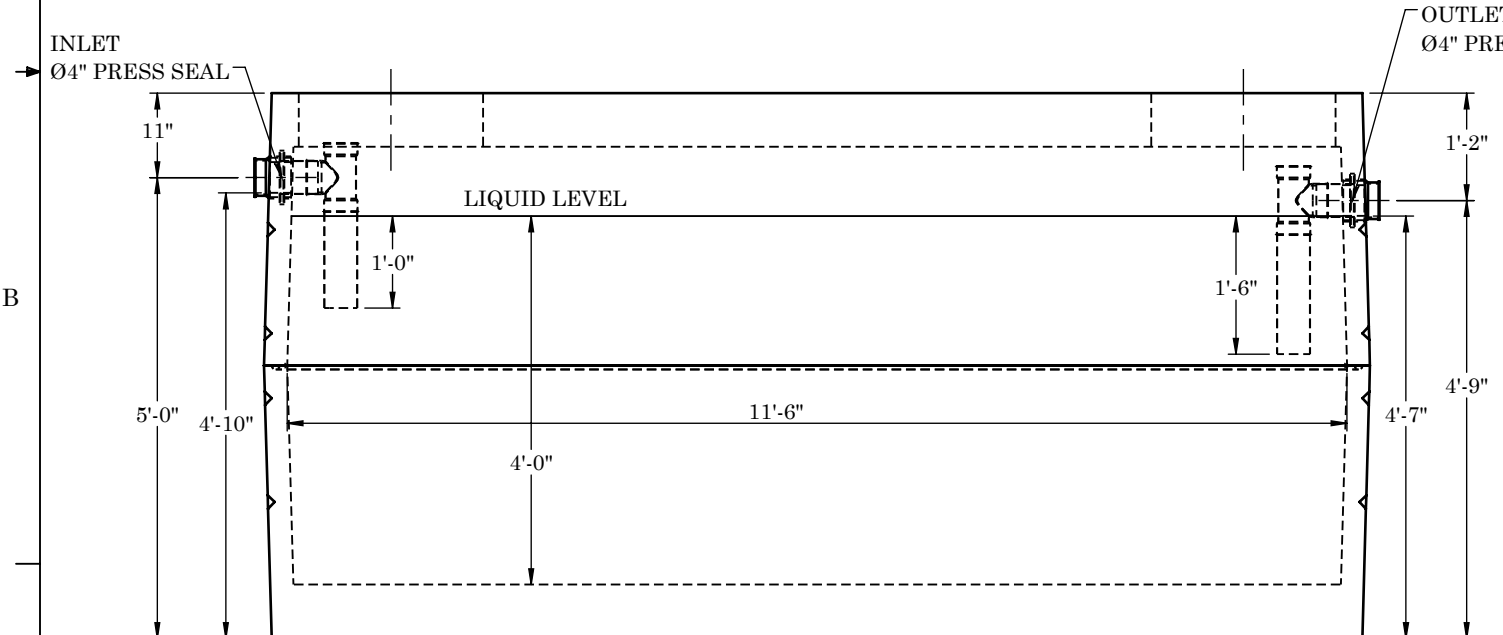


D

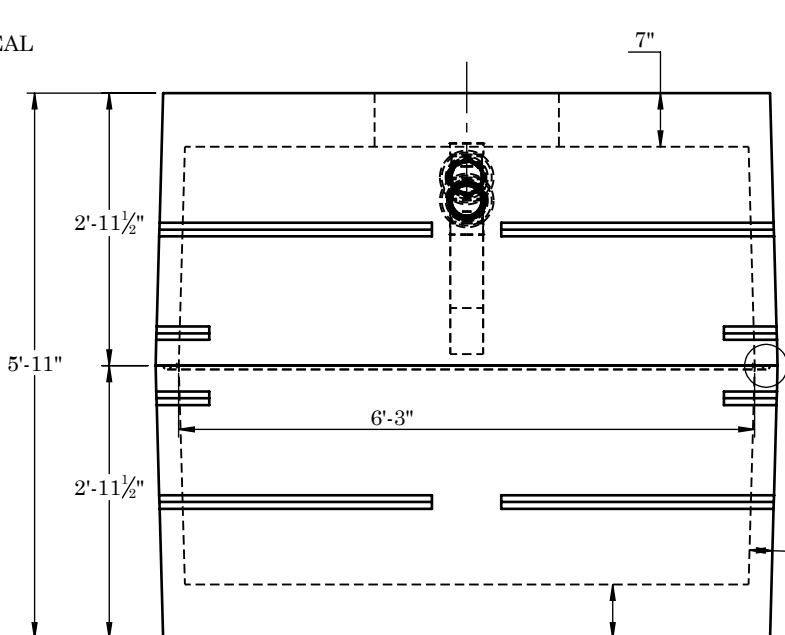
C

B

A



FRONT VIEW



SIDE VIEW

CONCRETE:
TANK CONSTRUCTION UTILIZES 6000 PSI
CONCRETE AND GRADE 60 REBAR

GALLON CALCS:
6'-3"W X 11'-6"L X 4'-0" H X 7.48 = 1613 GALLONS

RISERS:
PVC: Ø24" AND FIBER COVER (TO GRADE)
CONCRETE: Ø24" X 8" OR 12" (6" BELOW GRADE)

BEDDING:
4" PEA GRAVEL (NO WATER PRESENT)

EXCAVATION:
12" LARGER THAN TANK DIMENSIONS
EACH WAY, MAX BURY DEPTH 5'-0"

REINFORCEMENT:

-TOP
#4 U-BARS @ 5" O.C.E.W.
(2) #4 BARS EACH SIDE OF ACCESS

-SIDES
#4 BAR @ 5" O.C.E.W.

-BASE
#4 U-BARS @ 5" O.C.E.W.



2215 E. BROOKLYN AVE
SPOKANE, WA 99217
TOLL FREE 1-800-888-4573
(509) 325-4573 FAX (509) 325-5098
SPOKANE - LEWISTON - YAKIMA
www.wilbertprecast.com

TITLE:
2000 GALLON SINGLE COMPARTMENT
2-PIECE SEPTIC TANK HEAVY

SIZE	DWG. NO.	SCALE:	DATE:
B	#1614TB	NTS	7/31/2025