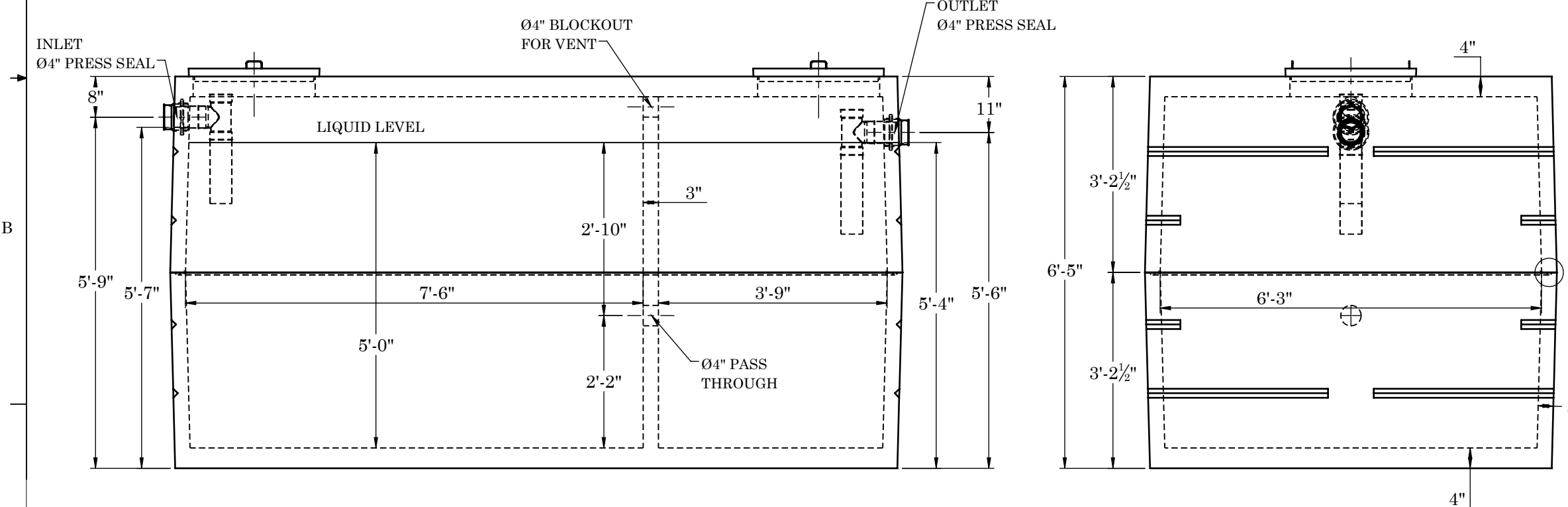
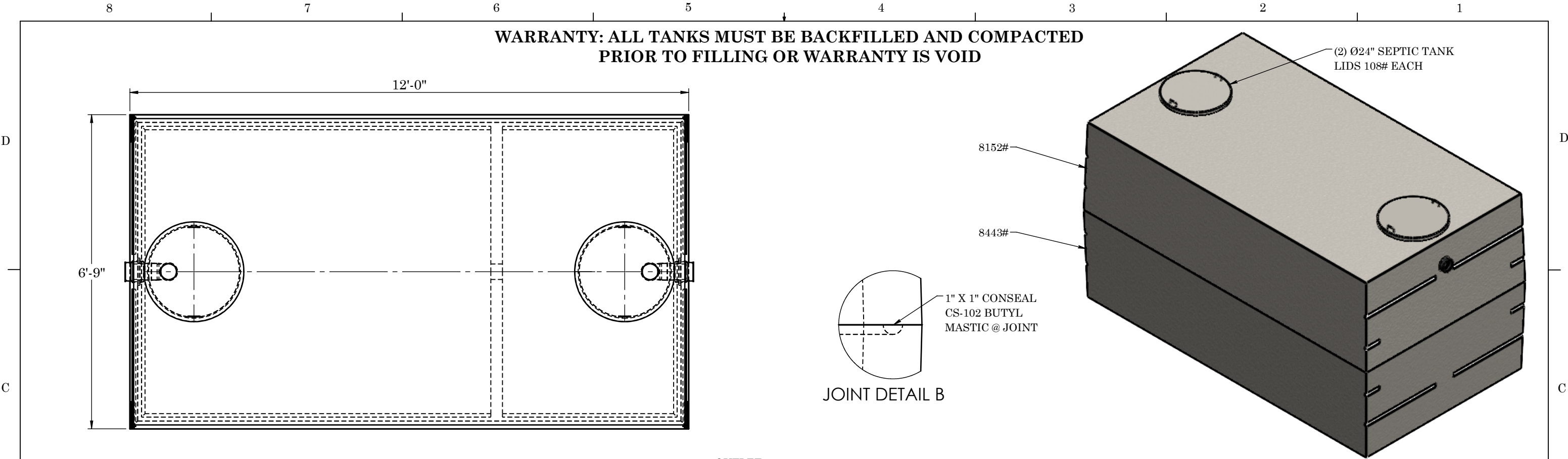


WARRANTY: ALL TANKS MUST BE BACKFILLED AND COMPACTED
PRIOR TO FILLING OR WARRANTY IS VOID



CONCRETE:
TANK CONSTRUCTION UTILIZES 6000 PSI
CONCRETE AND GRADE 60 REBAR

GALLON CALCS:
6'-3"W X 11'-6"L X 5'-0"H X 7.48 = 2688 GALLONS

RISERS:
PVC: Ø24" AND FIBER COVER (TO GRADE)
CONCRETE: Ø24" X 8" OR 12" (6" BELOW GRADE)

BEDDING:
4" PEA GRAVEL (NO WATER PRESENT)

EXCAVATION:
12" LARGER THAN TANK DIMENSIONS
EACH WAY, MAX BURY DEPTH 3'-0"

| REINFORCEMENT: | |
|----------------|--|
| -TOP | #4 U-BARS @ 6" O.C.E.W. (2) #4 BARS EACH SIDE OF ACCESS |
| -SIDES | #4 BAR @ 6" O.C. HORIZONTAL |
| -BASE | #4 U-BARS @ 6" O.C.E.W. |



2215 E. BROOKLYN AVE
SPOKANE, WA 99217
TOLL FREE 1-800-888-4573
(509) 325-4573 FAX (509) 325-5098
SPOKANE - LEWISTON - YAKIMA
www.wilbertprecast.com

| TITLE: | | | |
|---|----------|--------|-----------|
| 2500 GALLON DOUBLE COMPARTMENT 2-PIECE SEPTIC TANK | | | |
| SIZE | DWG. NO. | SCALE: | DATE: |
| B | #1641 | NTS | 7/31/2025 |