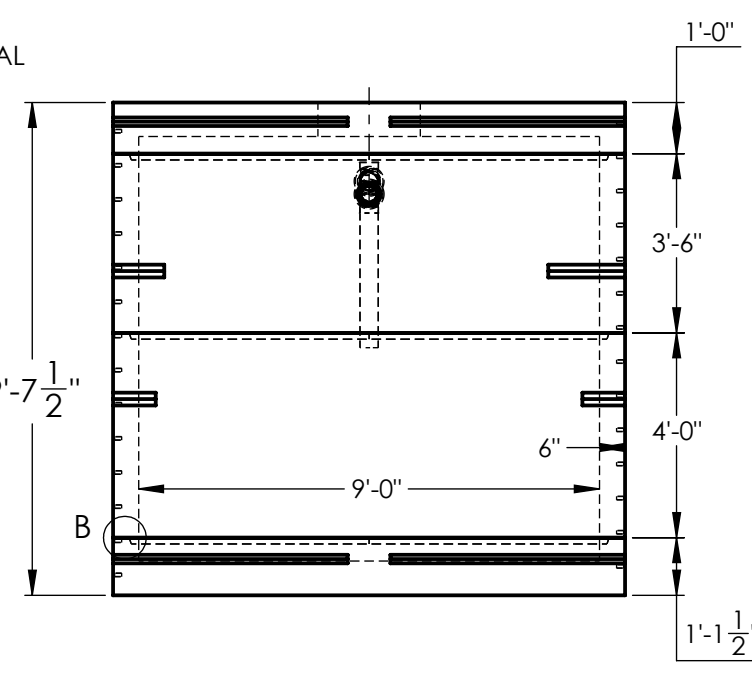
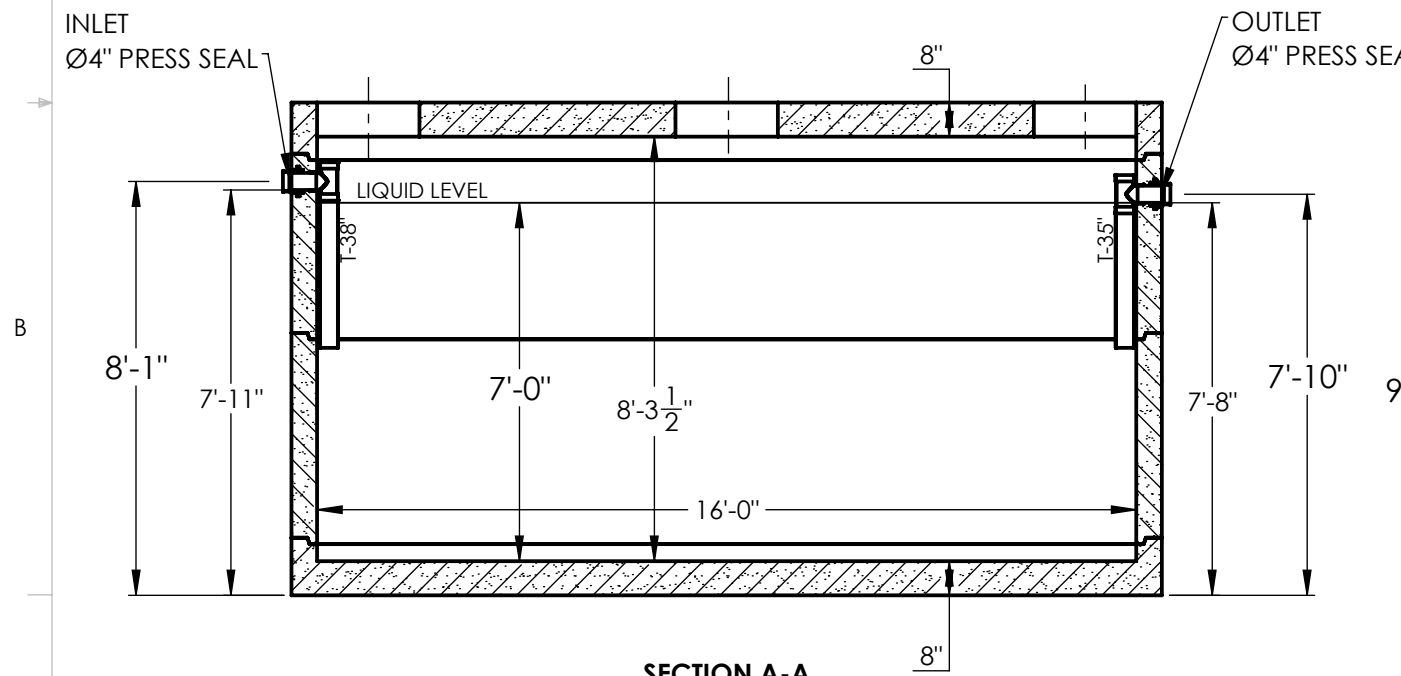
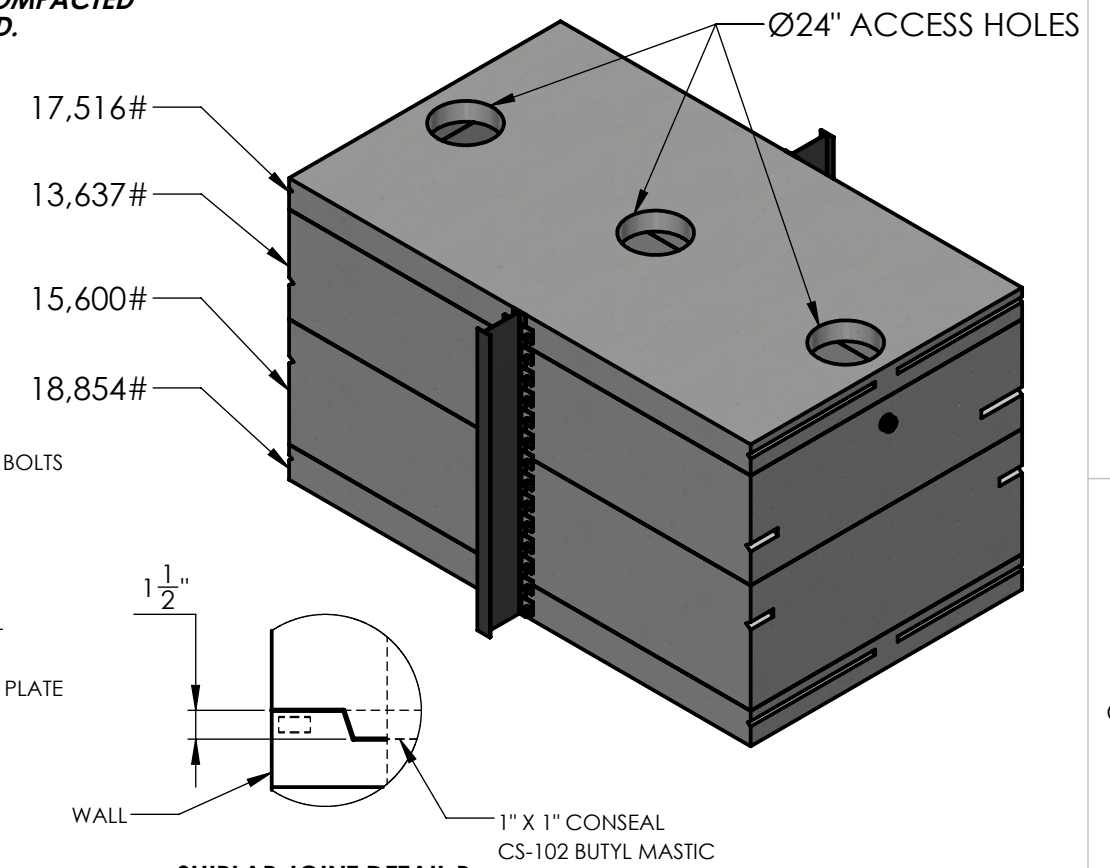
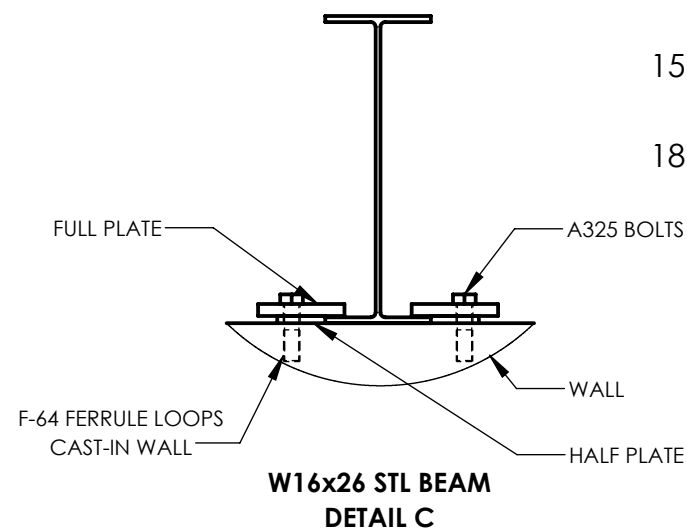
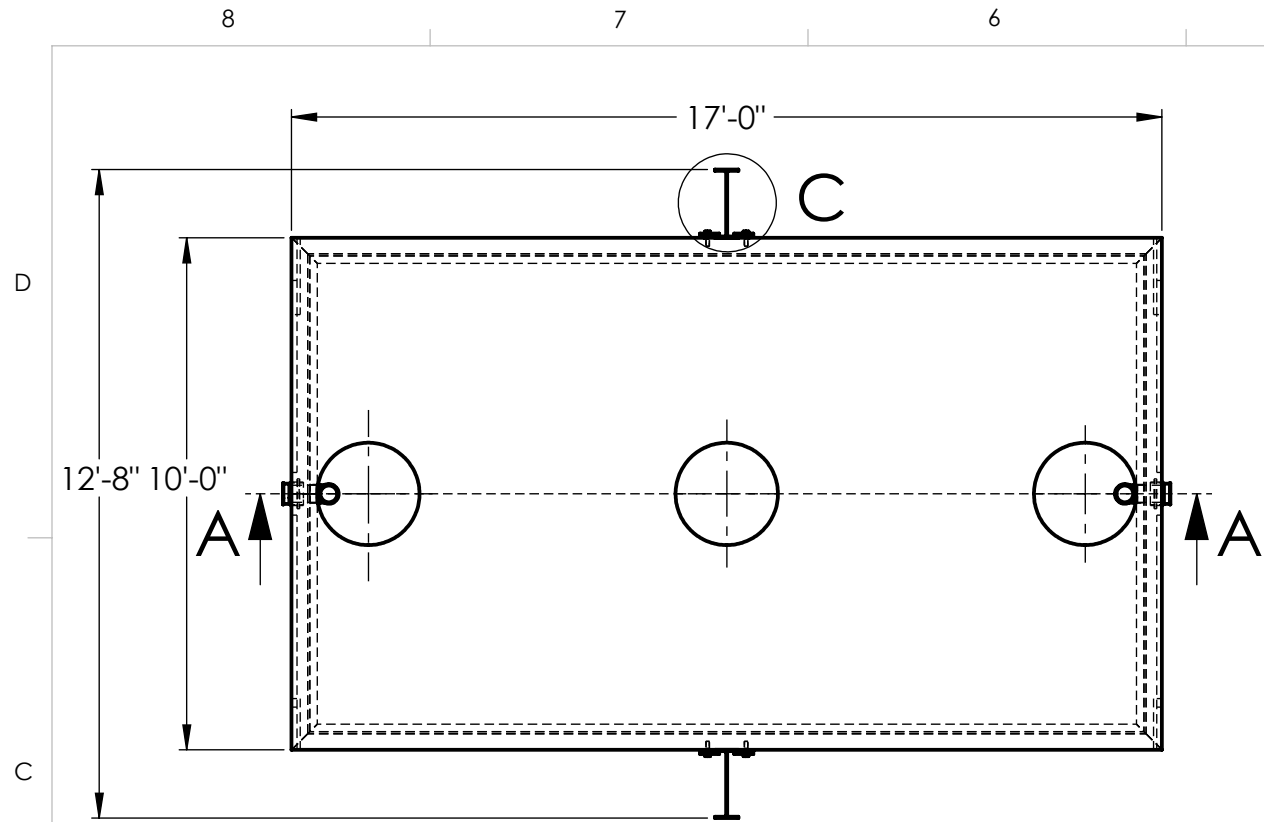


**WARRANTY: ALL TANKS MUST BE BACKFILLED AND COMPACTED PRIOR TO FILLING OR WARRANTY IS VOID.**



- CONCRETE:**  
TANK CONSTRUCTION UTILIZES 6000 PSI CONCRETE AND GRADE 60 REBAR
- GALLON CALCULATIONS:**  
9'-0" W x 16'-0" L x 7'-0" H x 7.48 = 7,540 GAL
- NON-TRAFFIC RISERS:**  
PVC: 24" Ø & FIB. COVER (TO GRADE)  
CONCRETE: 24" Ø x 8" OR 12" (6" BELOW GRADE)
- TRAFFIC RISERS/COVERS:**  
24" Ø GRADE RINGS (2", 3", 4", 5", 6", 13")  
4" x 24" Ø CAST-IRON GASKETED BOLT-DOWN
- UPLIFT RINGS:**  
BURY DEPTH WITH WATER AT GRADE ~ 4"  
BURY DEPTH WITH WATER AT TOP OF TANK ~ 2"
- BEDDING:**  
4" FEA GRAVEL OR COMPACTED CRUSHED GRAVEL (NO WATER PRESENT)
- EXCAVATION:**  
12" LARGER EACH WAY THAN TANK DIMENSION
- BURY:**  
MAXIMUM BURY DEPTH 5'-0"
- NOTES:**
- 1077 GALLONS/VERTICAL FOOT CAPACITY
  - ON-SITE CRANE SUPPLIED BY CONTRACTOR (20,000# PICK TO CENTER OF EXCAVATION)
  - WIDE FLANGE INSTALLED BY CONTRACTOR. PLATE & BOLT SPACING @ EVERY 8"

**NOTES:**

REINFORCEMENT:  
WALLS:  
-#6 @ 6" O.C. HORIZONTAL  
-#4 @ 10" O.C. VERTICAL  
TOP & BOTTOM  
-#6 @ 6" O.C. SHORT DIRECTION  
#5 @ 12" O.C. LONG DIRECTION, (2) #5 BAR LONG SIDE OF ACCESS, (2) #6 BAR SHORT SIDE



**2215 E. BROOKLYN AVE  
SPOKANE, WA 99217  
TOLL FREE 1-800-888-4573  
(509) 325-4573 FAX (509) 325-5098  
SPOKANE - LEWISTON - YAKIMA  
www.wilbertprecast.com**

TITLE: 7000 GALLON SINGLE COMPARTMENT TANK TRAFFIC BEARING		DATE: 5/20/2025	
SIZE <b>B</b>	DWG. NO. 916-7S	SCALE: NTS	

DRAWN BY:  
TH