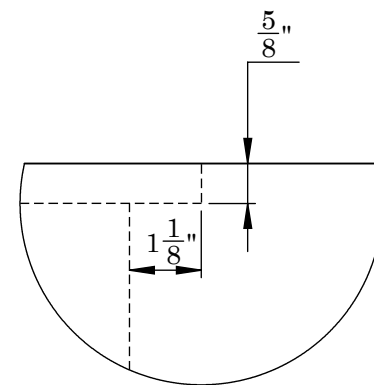
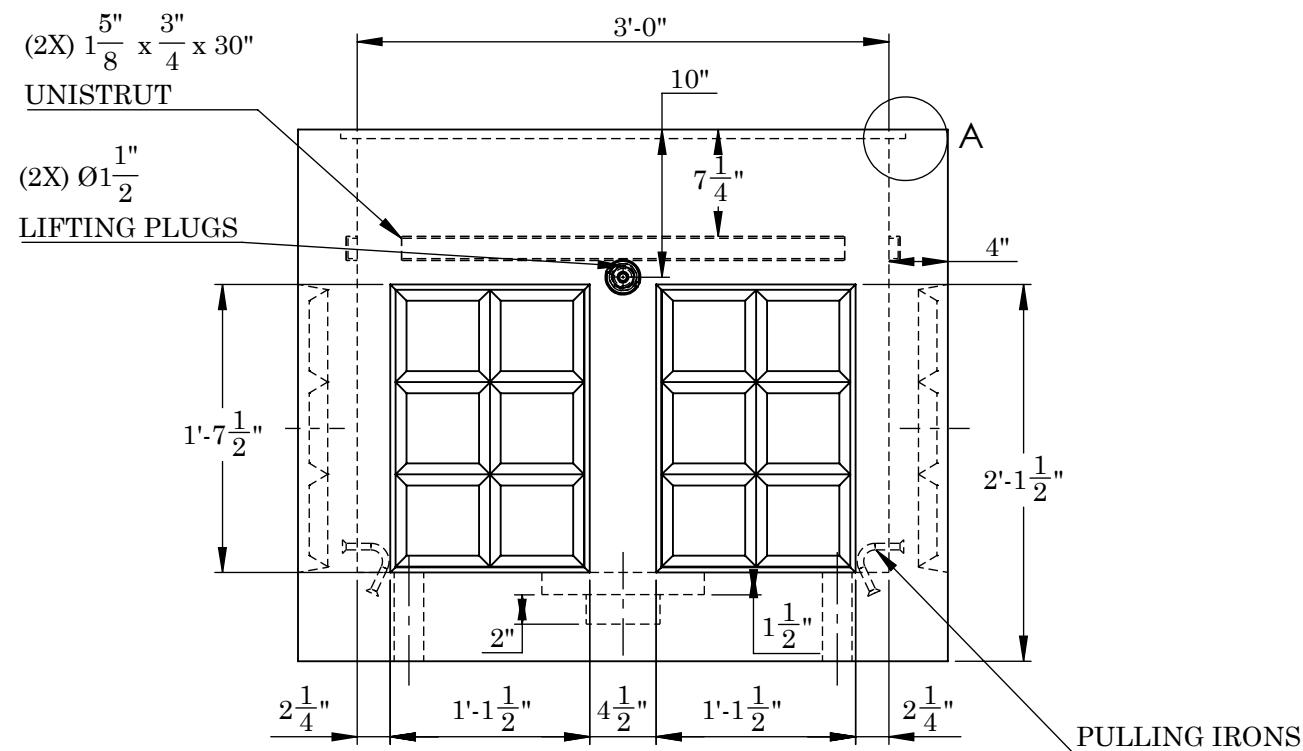
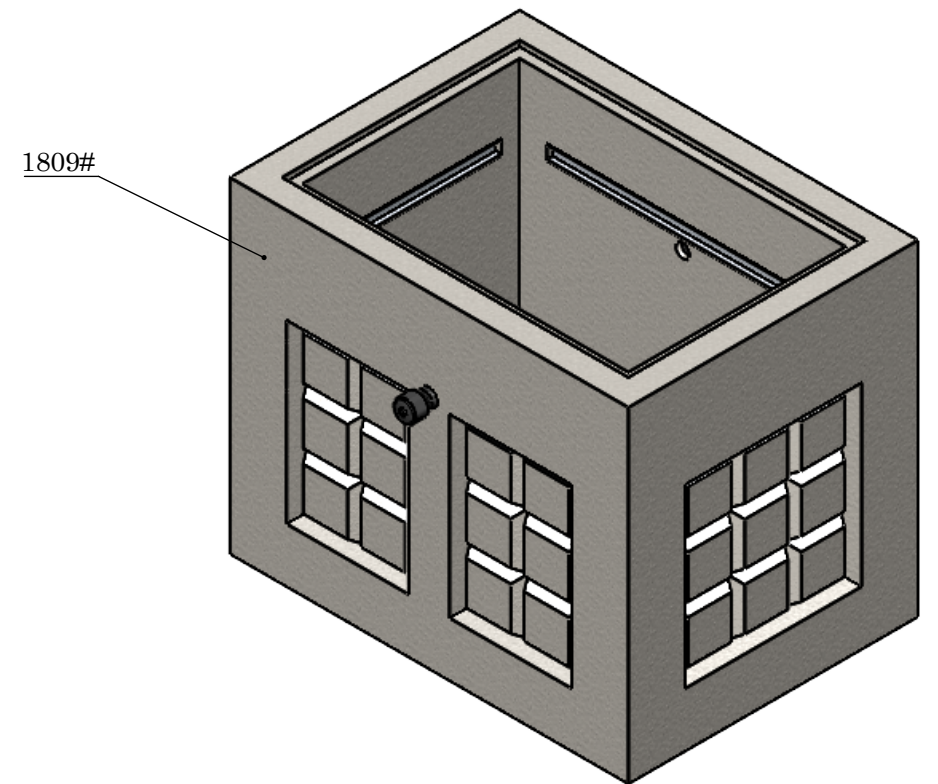


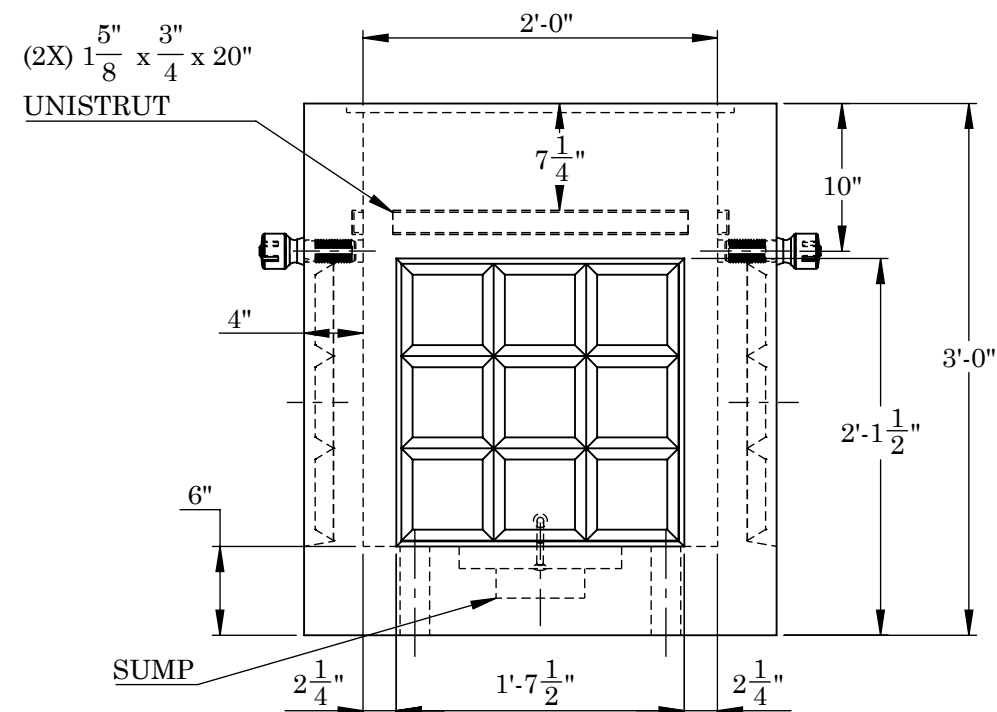
TOP VIEW



SHIPLAP DETAIL A



FRONT VIEW



SIDE VIEW

NOTES:

REINFORCEMENT:
 -BASE: #4 BAR @ 6" O.C. THROUGHOUT
 -H2O RATED LIGHT TRAFFIC ONLY



2215 E. BROOKLYN AVE
 SPOKANE, WA 99217
 TOLL FREE 1-800-888-4573
 (509) 325-4573 FAX (509) 325-5098
 SPOKANE - LEWISTON - YAKIMA
 www.wilbertprecast.com

TITLE:

2'-8" X 3'-8" X 3'-0" WP2436 VAULT BASE

SIZE

B

DWG. NO.

WP2436B

SCALE:

NTS

DATE:

8/1/2025

REV A
 DRAWN FOR:
 DRAWN BY:
 TH