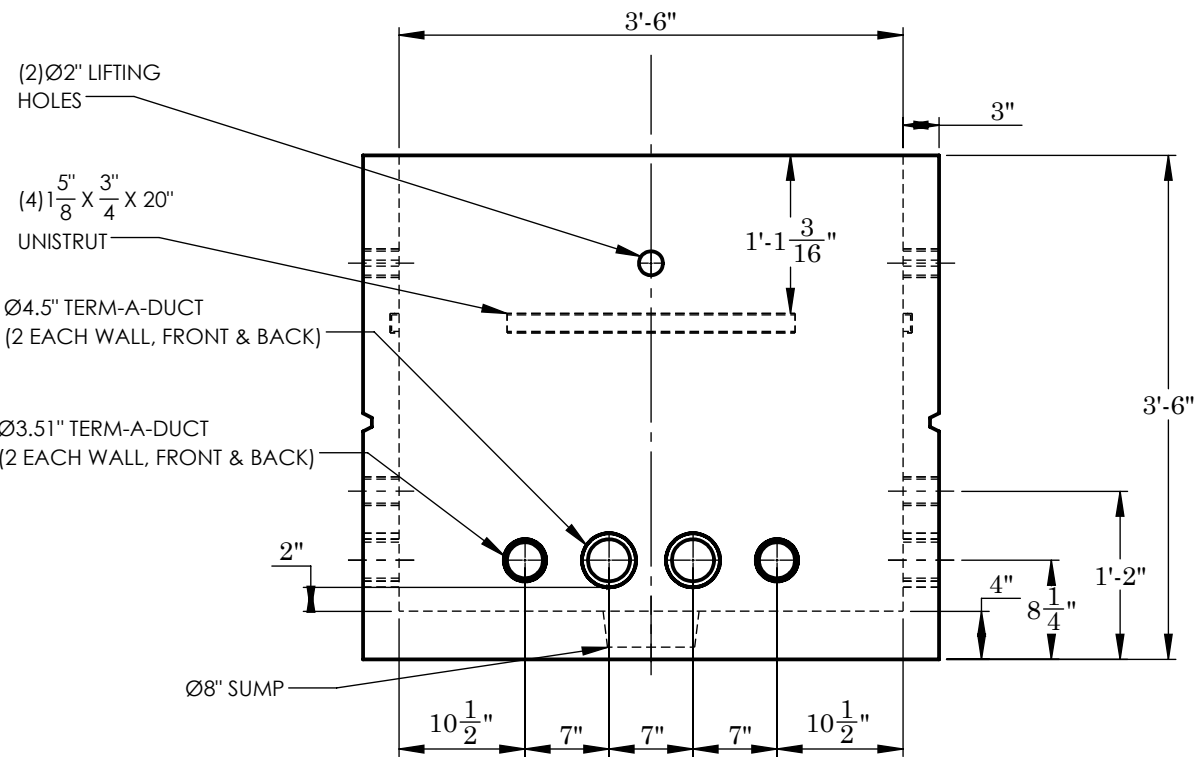
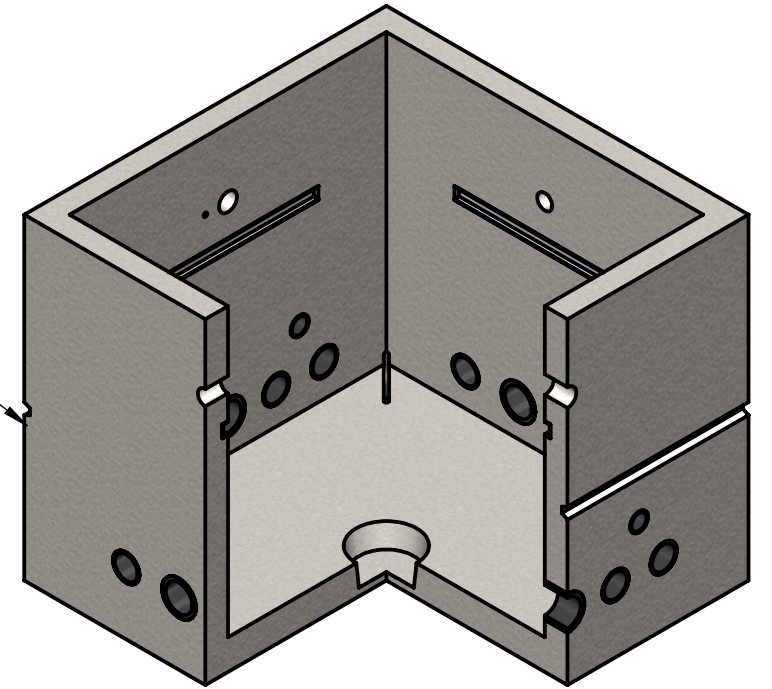


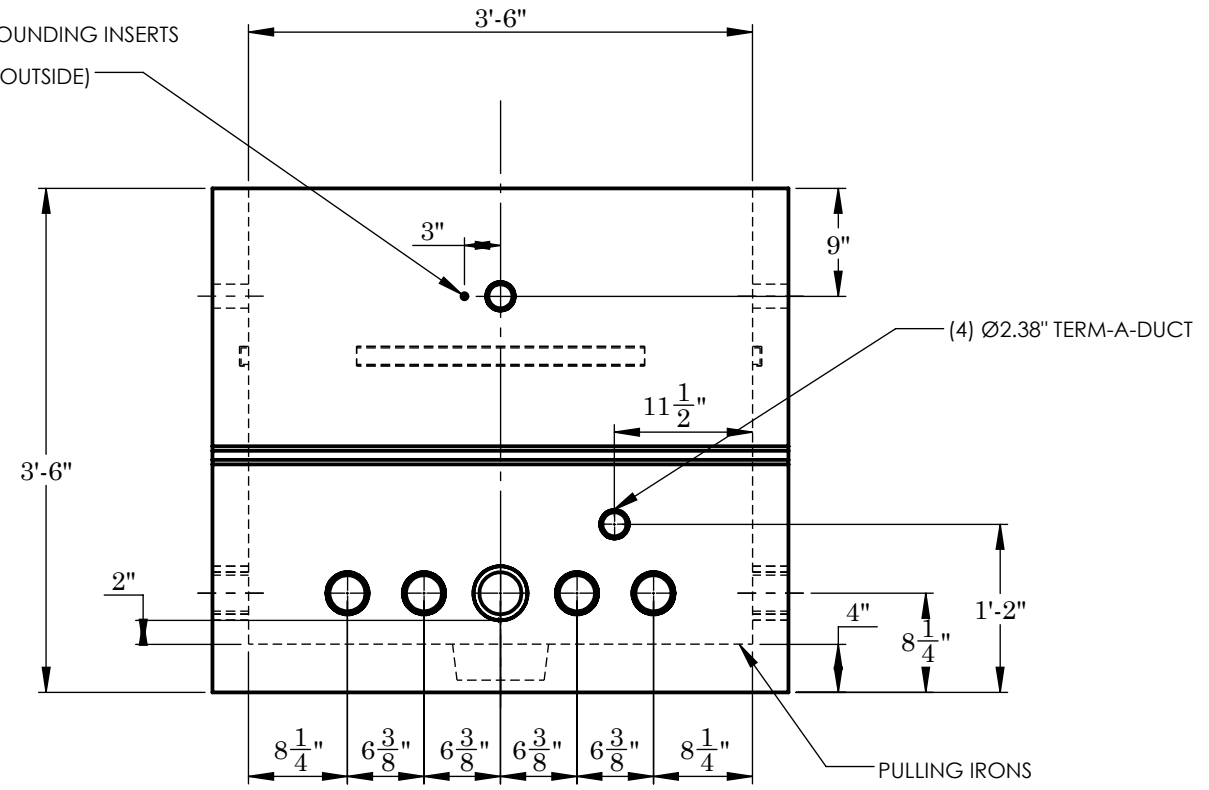
TOP VIEW

2,501#



FRONT VIEW

(4) $\frac{1}{2}$ " GROUNDING INSERTS
(2 INSIDE, 2 OUTSIDE)



SIDE VIEW

NOTES:
REINFORCEMENT:
-6X6 MESH IN BASE



2215 E. BROOKLYN AVE
SPOKANE, WA 99217
TOLL FREE 1-800-888-4573
(509) 325-4573 FAX (509) 325-5098
SPOKANE - LEWISTON - YAKIMA
www.wilbertprecast.com

TITLE: 3'-6" X 3'-6" VAULT BASE

SIZE B	DWG. NO. WP444B	SCALE: NTS	DATE: 8/4/2025
-------------------------	----------------------------------	----------------------	--------------------------

DRAWN BY:
TH