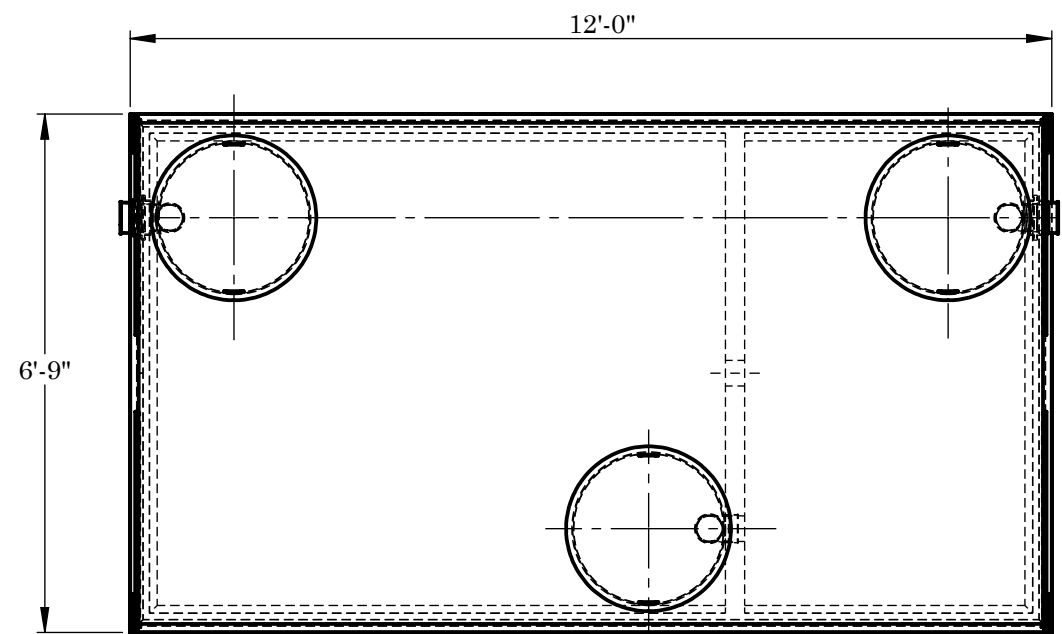
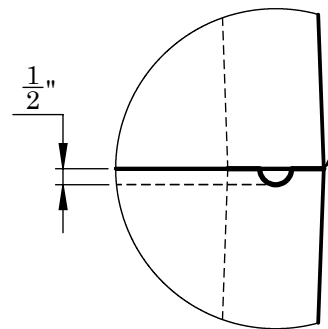


WARRANTY: ALL TANKS MUST BE BACKFILLED AND COMPACTED PRIOR TO FILLING OR WARRANTY IS VOID.

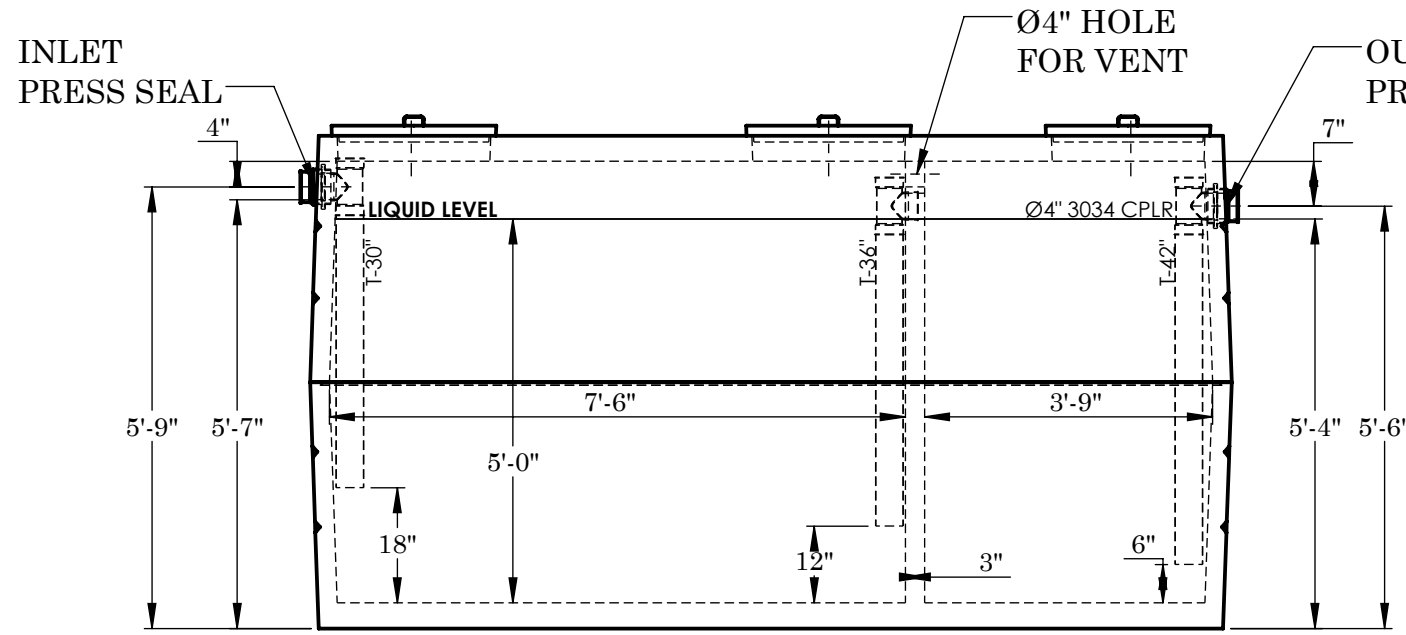
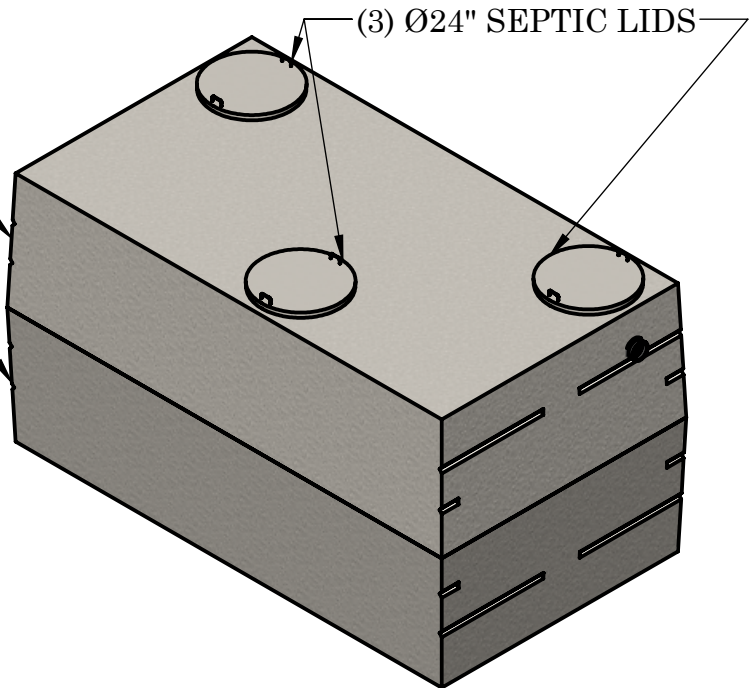


TOP VIEW

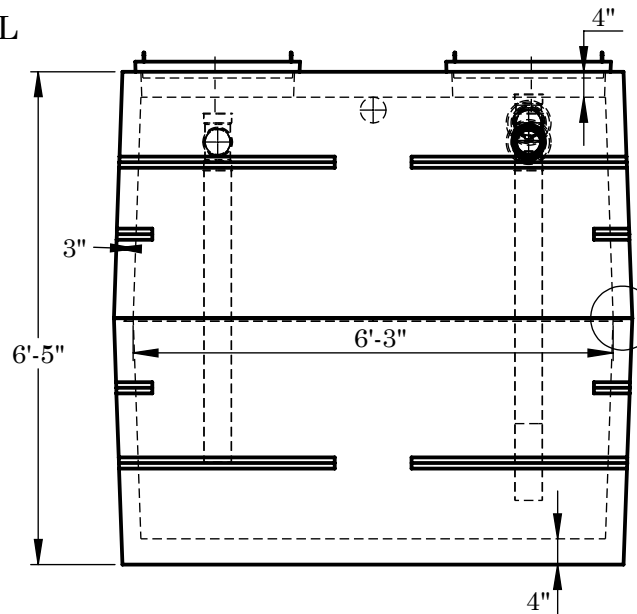


JOINT DETAIL A

LID  
7,947#  
  
BASE  
8,396#



FRONT VIEW



SIDE VIEW

**CONCRETE:**  
TANK CONSTRUCTION UTILIZES 4000 PSI CONCRETE AND GRADE 60 REBAR.

**GALLON CALCS:**  
6'-3"W x 7'-6"L x 5'-0" x 7.48 = 1,753 GALLONS  
6'-3"W x 3'-9"L x 5'-0" x 7.48 = 877 GALLONS

**RISERS:**  
PVC: Ø24" & FIBER COVER (TO GRADE)  
CONCRETE: Ø24" x 8" OR 12" (6" BELOW GRADE)

**BEDDING:**  
4" PEA GRAVEL (NO WATER PRESENT)

**EXCAVATION:**  
12" LARGER EACH WAY THAN TANK DIM.  
MAX COVER ON TOP 3'-0"

**NOTES:**  
REINFORCEMENT:  
-#4 BARS @ 6" O.C.E.W. U-BARS IN TOP,  
(2) #4 EACH SIDE OF ACCESS  
-#4 BARS @ 6" O.C.E.W. IN SIDES  
-#4 BARS @ 6" O.C.E.W. U-BARS IN BOTTOM



2215 E. BROOKLYN AVE  
SPOKANE, WA 99217  
TOLL FREE 1-800-888-4573  
(509) 325-4573 FAX (509) 325-5098  
SPOKANE - LEWISTON - YAKIMA  
www.wilbertprecast.com

DRAWN BY:  
TH

TITLE: 2500 GALLON DOUBLE COMPARTMENT 2-PIECE GREASE INTERCEPTOR			
SIZE <b>B</b>	DWG. NO. #1641-4"	SCALE: NTS	DATE: 8/27/2025