

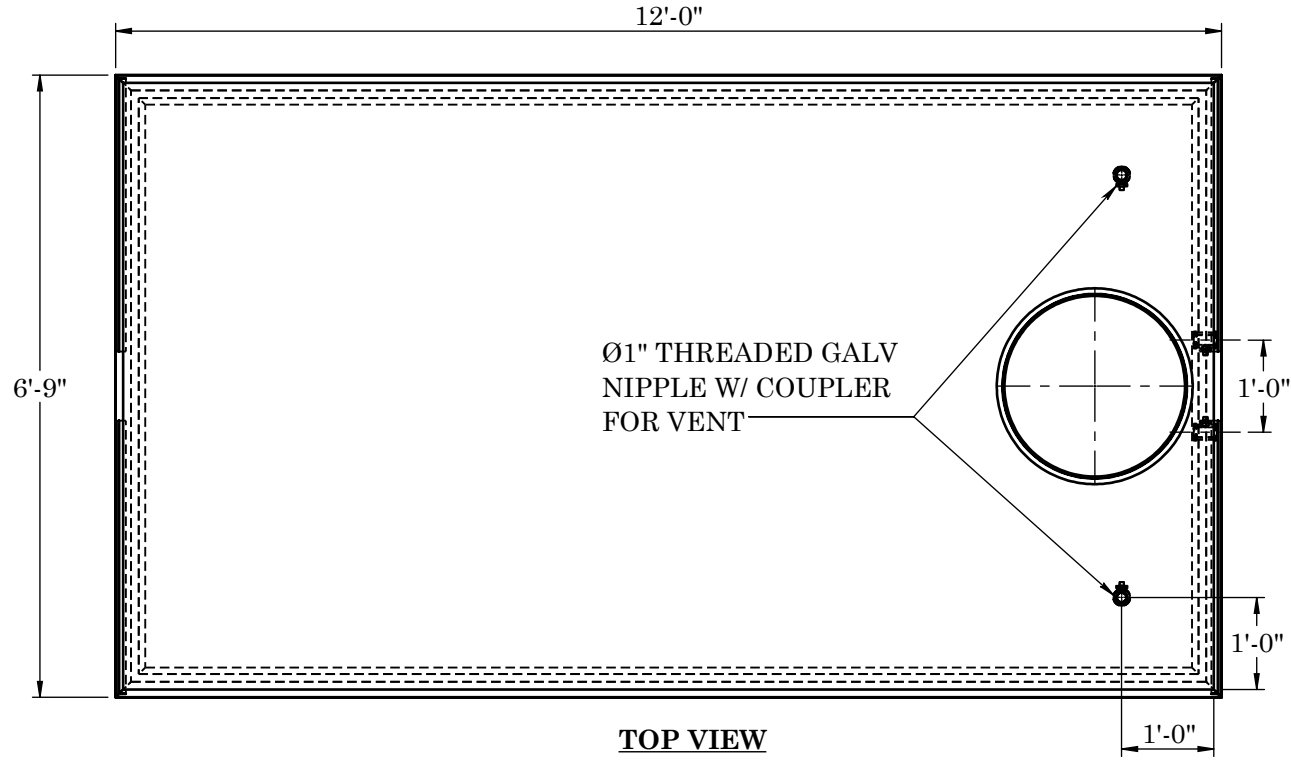
WARRANTY: ALL TANKS MUST BE BACKFILLED AND COMPACTED  
PRIOR TO FILLING OR WARRANTY IS VOID

D

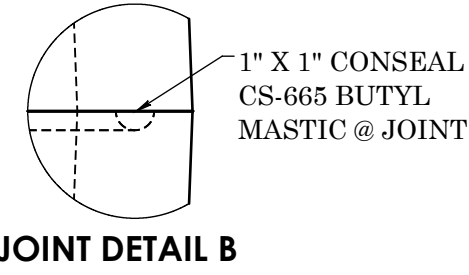
C

B

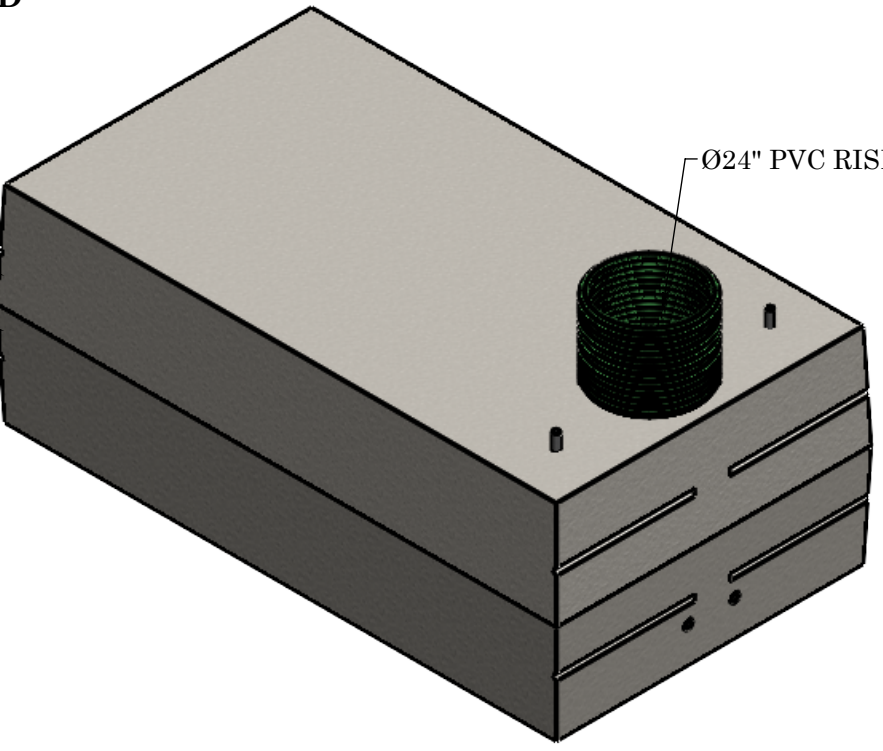
A



TOP VIEW



JOINT DETAIL B

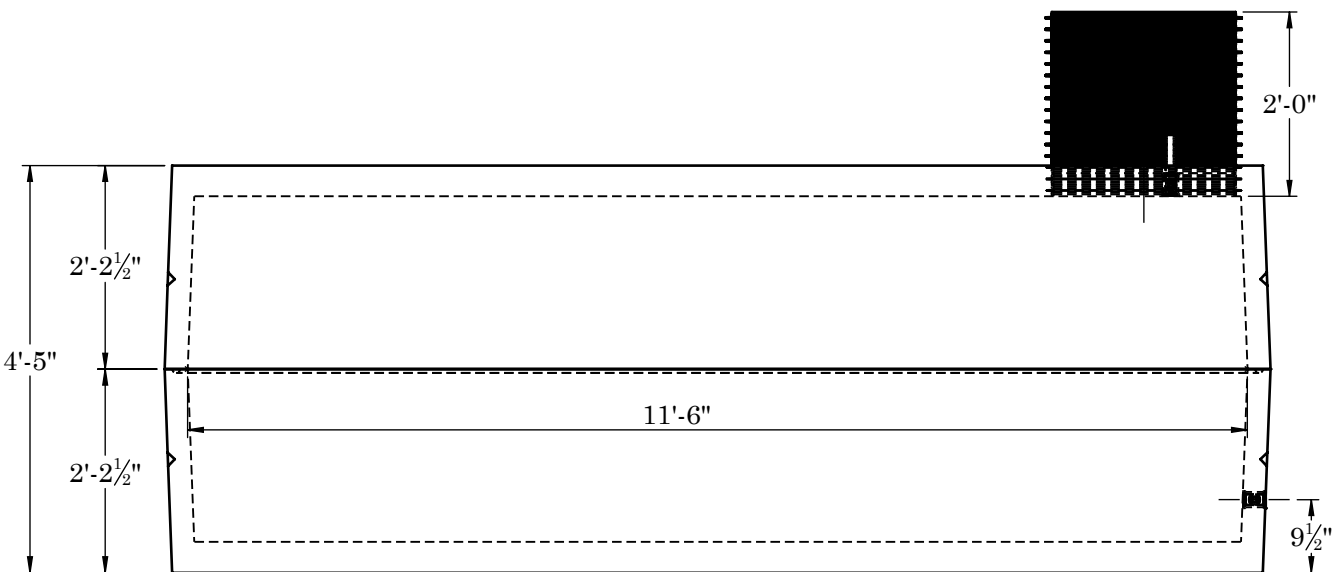


D

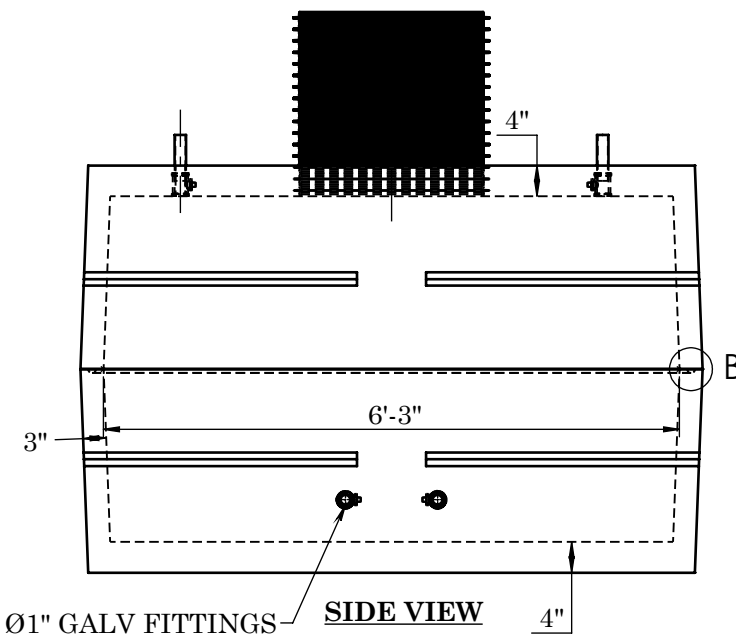
C

B

A



FRONT VIEW



SIDE VIEW

- BEDDING:**  
4" PEA GRAVEL (NO WATER PRESENT)
- GALVANIZED FITTING OPTIONS:**  
Ø1", 1 1/4", 1 1/2", 2". CUSTOM TANK FITTINGS CAN BE LOCATED ANYWHERE IN TANK
- TOP ACCESS HOLE OPTIONS:**  
FLANGE ADAPTERS Ø24" OR Ø30"  
PVC RISERS Ø24" OR Ø30"  
LIDS CAN BE INSULATED OR NON INSULATED
- EXCAVATION:**  
12" LARGER THAN TANK DIMENSIONS EACH WAY, MAX BURY DEPTH 3'-0"

REINFORCEMENT:	
-TOP	#4 U-BARS @ 12" O.C.E.W.
-SIDES	#4 BAR @ 12" O.C.E.W.
-BASE	#4 U-BARS @ 12" O.C.E.W.



2215 E. BROOKLYN AVE  
SPOKANE, WA 99217  
TOLL FREE 1-800-888-4573  
(509) 325-4573 FAX (509) 325-5098  
SPOKANE - LEWISTON - YAKIMA  
www.wilbertprecast.com

TITLE: 2000 GALLON 2-PIECE WATER TANK			
SIZE	DWG. NO.	SCALE:	DATE:
B	#1704	NTS	9/11/2025