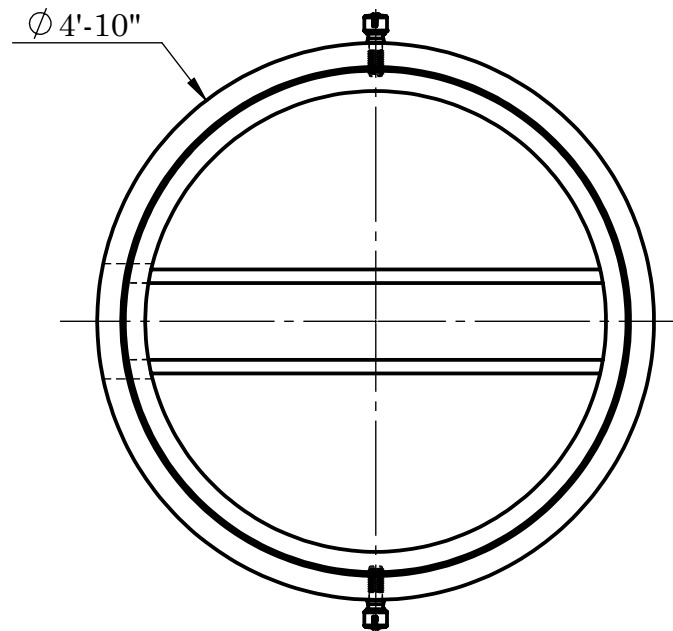
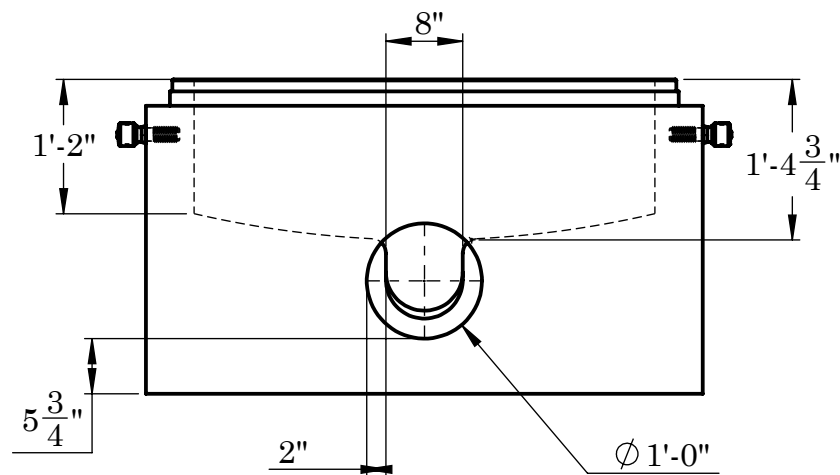
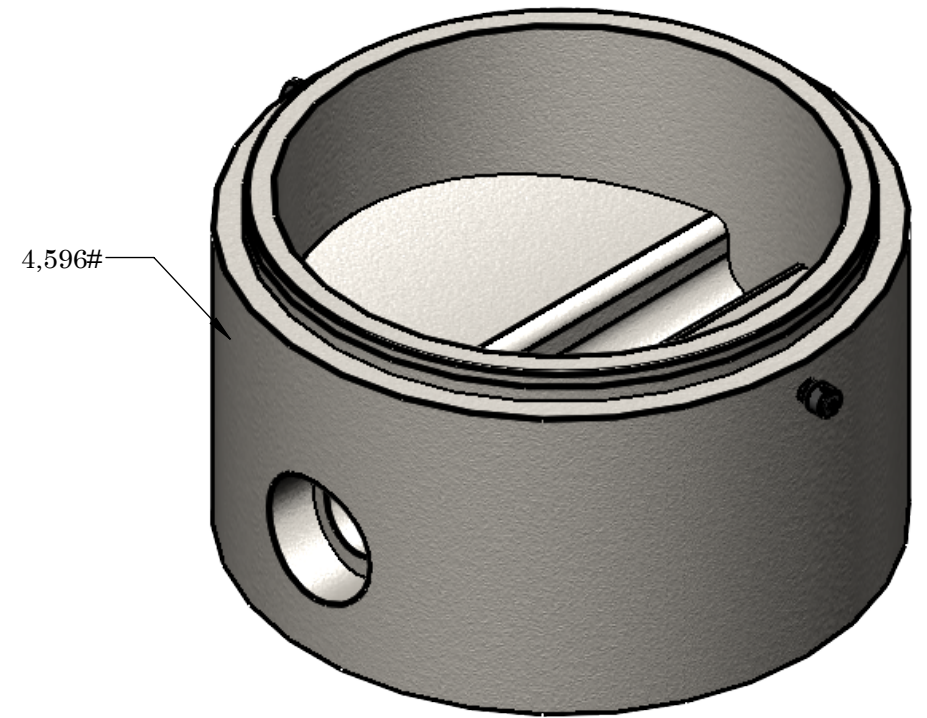


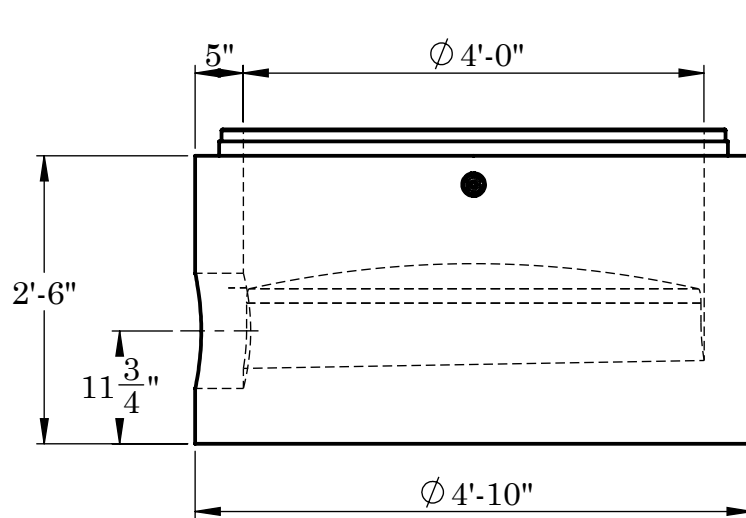
SHIPLAP DETAIL A



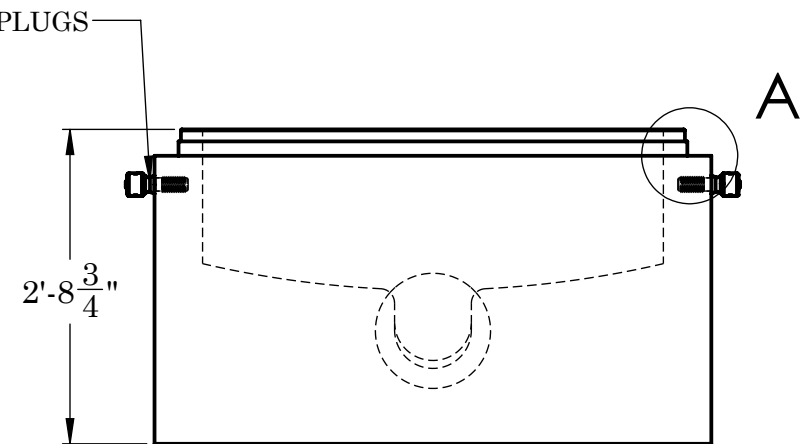
TOP VIEW



FRONT VIEW



SIDE VIEW



BACK VIEW

NOTES:

REINFORCEMENT:

-4X4 W5/W5 WIRE CAGE THROUGHOUT
IN BASE
-4X8 W4/W1.7 WIRE CAGE THROUGHOUT
IN WALLS



2215 E. BROOKLYN AVE
SPOKANE, WA 99217
TOLL FREE 1-800-888-4573
(509) 325-4573 FAX (509) 325-5098
SPOKANE - LEWISTON - YAKIMA
www.wilbertprecast.com

DRAWN BY:
TH

TITLE:

Ø48" MANHOLE 2' DEAD END

SIZE

B

DWG. NO.

482B-DE

SCALE:

NTS

DATE:

4/18/2025