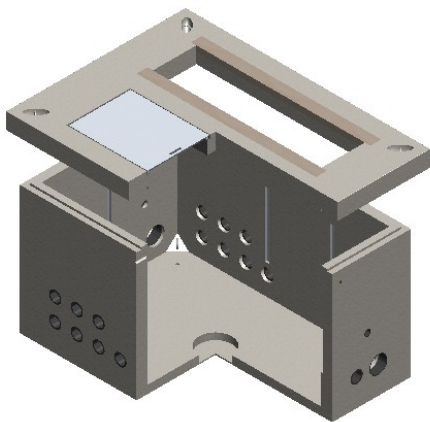


PRECAST ELECTRICAL VAULT SOLUTIONS - PACIFICORP STANDARDS

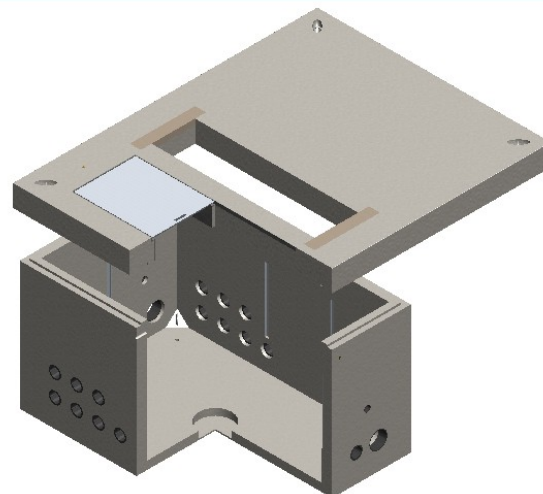
Wilbert Precast Provides Engineered Vaults, Bases, & Lids Compliant
with Pacficorp ZG Series Requirements



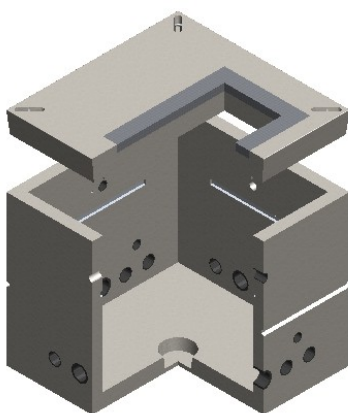
ONE QUALITY PRODUCT AT A TIME



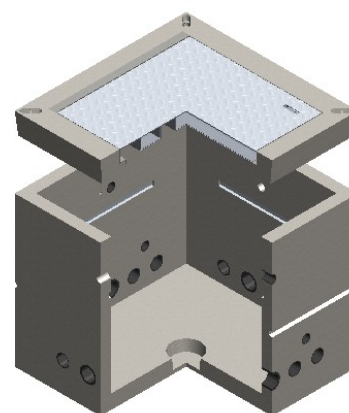
WP575 VAULT WITH PAD MOUNT STYLE 1	
FEATURE	DETAIL
PACIFICORP SI #	7992605
DIMENSIONS	7'-6" x 4'-10" x 4'-6"
WEIGHT	7,140 LBS
COMPONENTS	WP575B, WP5676PM6T
USE	For Single-Phase & Three-Phase Sectionalizers
ZG REQUIREMENT SPEC	ZG 621



WP575 VAULT WITH PAD MOUNT STYLE 2	
FEATURE	DETAIL
PACIFICORP SI #	7992600
DIMENSIONS	7'-2" x 9'-4" x 4'-8"
WEIGHT	10,439 LBS
COMPONENTS	WP575B, WP7294PM8T
USE	For Three-Phase Transformer
ZG REQUIREMENT SPEC	ZG 521



WP444 VAULT WITH PAD MOUNT	
FEATURE	DETAIL
PACIFICORP SI #	7999607
DIMENSIONS	4'-0" x 4'-0" x 4'-0"
WEIGHT	3,501 LBS
COMPONENTS	WP444B, WP444PM
USE	For Single-Phase Transformer
ZG REQUIREMENT SPEC	ZG 501



WP444 VAULT WITH SINGLE HATCH	
FEATURE	DETAIL
PACIFICORP SI #	7992878
DIMENSIONS	4'-0" x 4'-0" x 4'-0"
WEIGHT	3,004 LBS
COMPONENTS	WP444B, WP44THS
USE	For Single-Phase Residential
ZG REQUIREMENT SPEC	ZG 501

Spokane Office
2215 E Brooklyn Avenue
Spokane, WA 99217
Ph: (509) 325-4573
Ex: (509) 325-5098

Yakima Office
2309 S 38th Avenue
Yakima, WA 98903
Ph: (509) 248-1984
Ex: (509) 248-9452

Lewiston Office
2710 4th Avenue N
Lewiston, ID 83501
Ph: (208) 746-1125
Ex: (208) 799-0811

REQUEST A
SUBMITTAL PACKAGE
TODAY!



SCAN FOR FULL SPEC
SHEET & CAD
DRAWING

