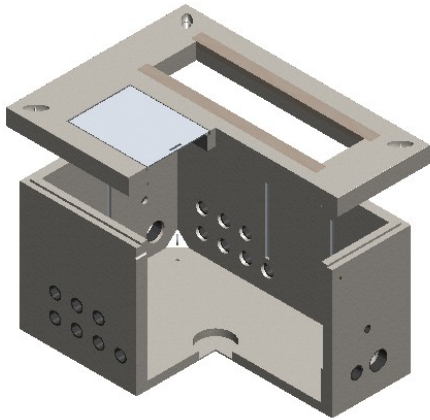


PRECAST ELECTRICAL VAULT SOLUTIONS - PACIFICORP STANDARDS

WILBERT PRECAST PROVIDES ENGINEERED VAULTS, BAES,
LIDS COMPLIANT WITH PACIFICORP ZG SERIES
REQUIREMENTS

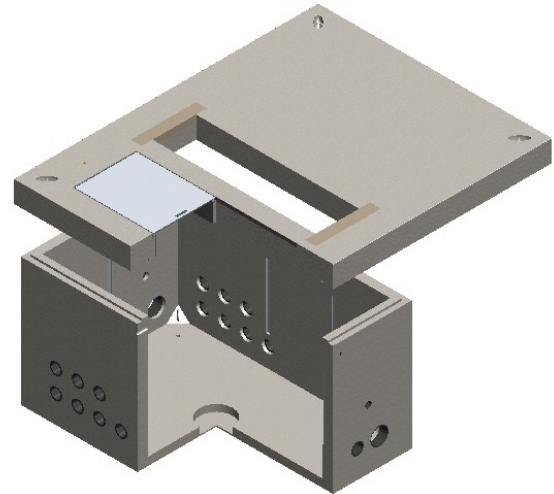


ONE QUALITY PRODUCT AT A TIME



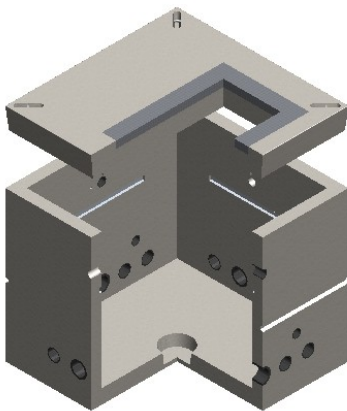
WP575 VAULT WITH PAD MOUNT STYLE 1

FEATURE	DETAIL
PACIFICORP SI #	7992605
DIMENSIONS	7'-6" X 4'-10" X 4'-6"
WEIGHT	7,140 LBS
COMPONENTS	WP575B, WP5676PM6T
USE	FOR SINGLE-PHASE & THREE-PHASE SECTIONALIZERS
ZG REQUIREMENT SPEC	ZG 621



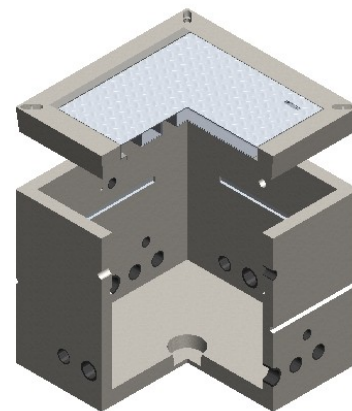
WP575 VAULT WITH PAD MOUNT STYLE 2

FEATURE	DETAIL
PACIFICORP SI #	7992600
DIMENSIONS	7'-2" X 9'-4" X 4'-8"
WEIGHT	10,439 LBS
COMPONENTS	WP575B, WP7294PM8T
USE	FOR THREE-PHASE TRANSFORMER
ZG REQUIREMENT SPEC	ZG 521



WP444 VAULT WITH PAD MOUNT

FEATURE	DETAIL
PACIFICORP SI #	7999607
DIMENSIONS	4'-0" X 4'-0" X 4'-0"
WEIGHT	3,501 LBS
COMPONENTS	WP444B, WP444PM
USE	FOR SINGLE-PHASE TRANSFORMER
ZG REQUIREMENT SPEC	ZG 501



WP444 VAULT WITH SINGLE HATCH

FEATURE	DETAIL
PACIFICORP SI #	7992878
DIMENSIONS	4'-0" X 4'-0" X 4'-0"
WEIGHT	3,004 LBS
COMPONENTS	WP444B, WP44THS
USE	FOR SINGLE-PHASE RESIDENTIAL
ZG REQUIREMENT SPEC	ZG 501

Spokane Office
2215 E Brooklyn Avenue
Spokane, WA 99217
Ph: (509) 325-4573
Fx: (509) 325-5088

Yakima Office
2309 S 38th Avenue
Yakima, WA 98903
Ph: (509) 248-1984
Fx: (509) 248-9452

Lewiston Office
2710 4th Avenue N
Lewiston, ID 83501
Ph: (208) 746-1125
Fx: (208) 799-0811

**REQUEST A SUBMITTAL
PACKAGE TODAY!**

**SCAN FOR FULL
SPEC SHEET & CAD
DRAWING**

