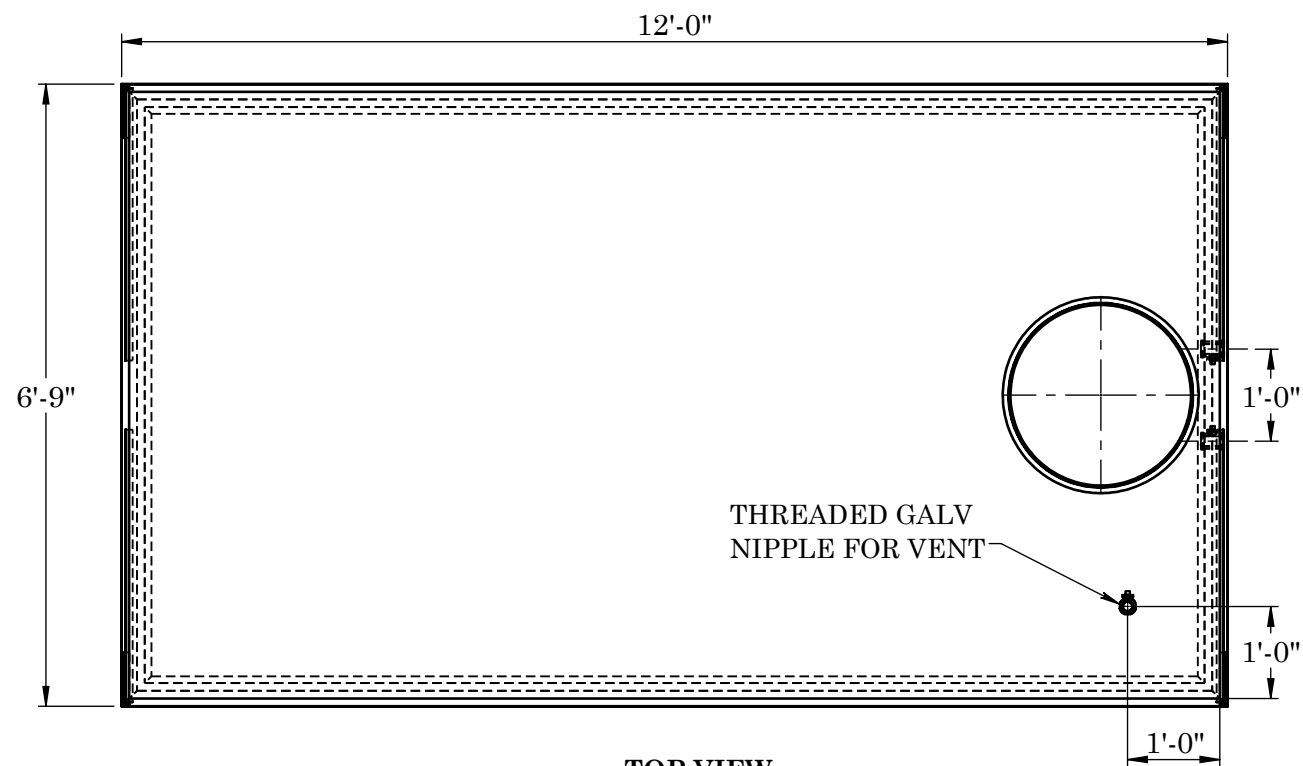
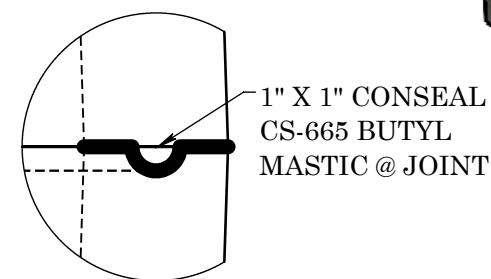


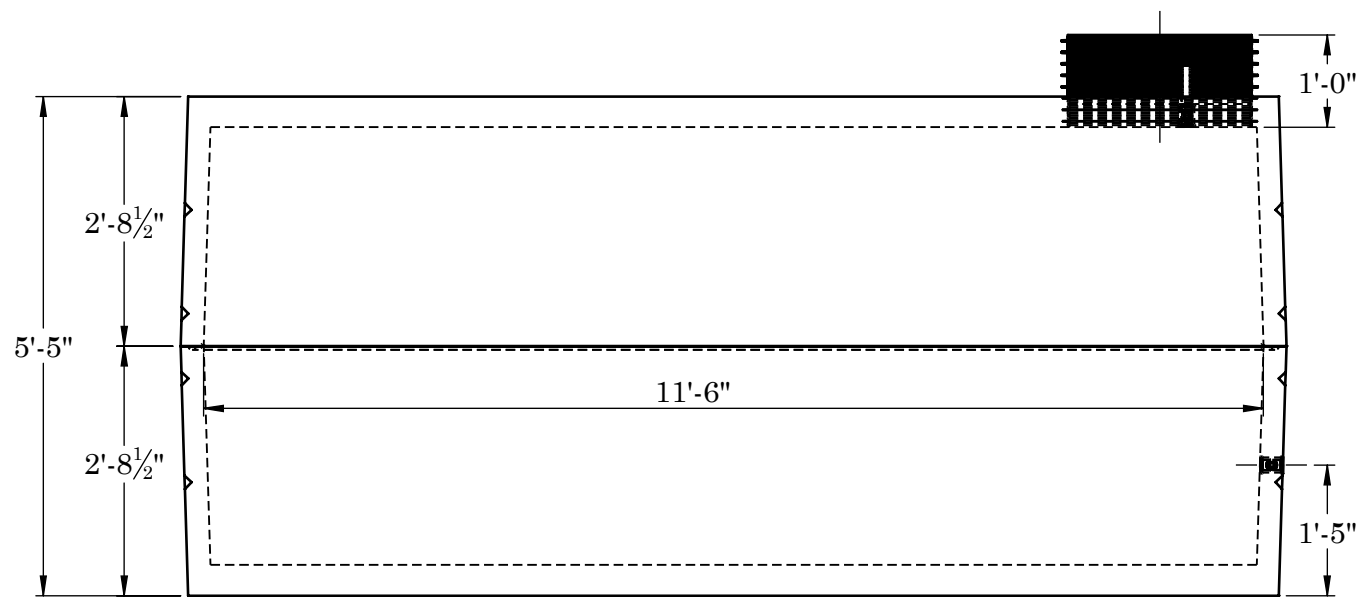
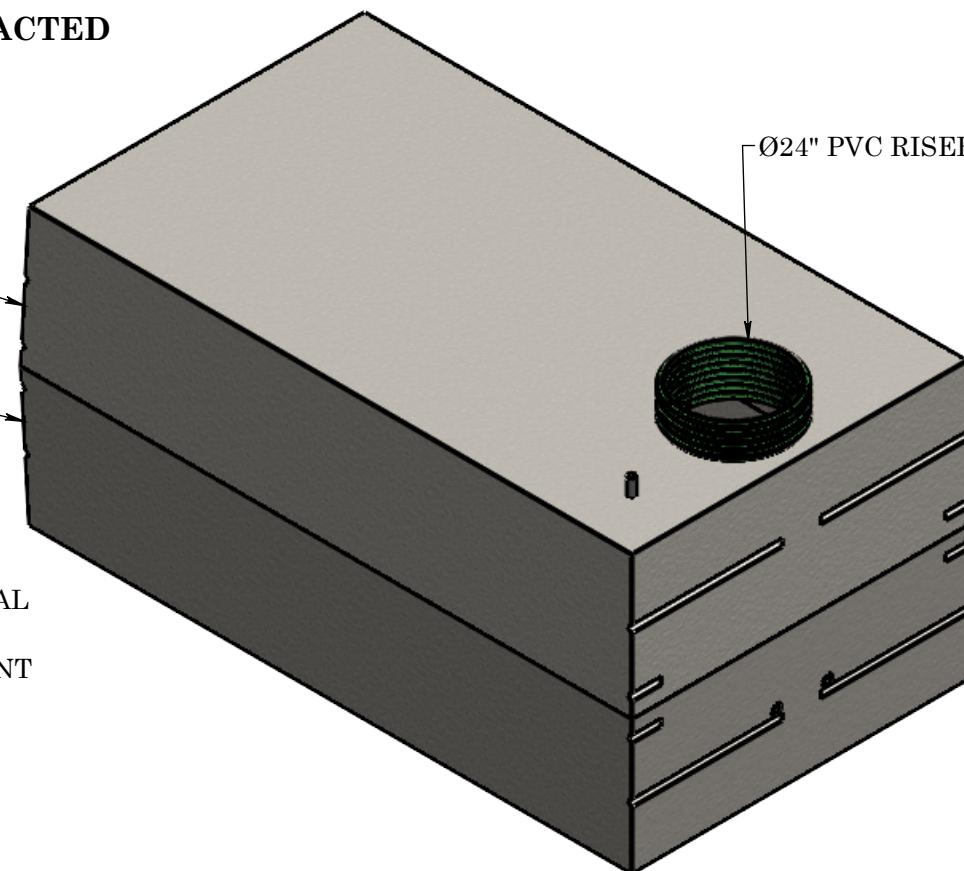
WARRANTY: ALL TANKS MUST BE BACKFILLED AND COMPACTED PRIOR TO FILLING OR WARRANTY IS VOID



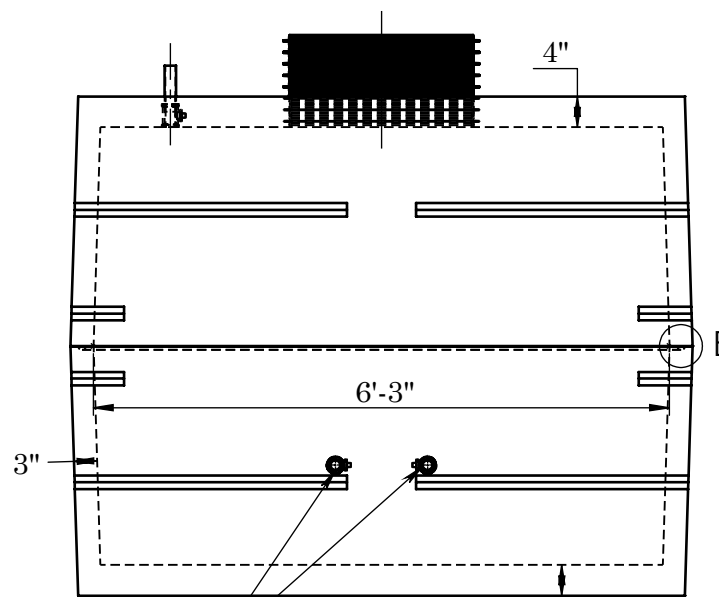
TOP VIEW



JOINT DETAIL B



FRONT VIEW



SIDE VIEW

BEDDING:
4" PEA GRAVEL (NO WATER PRESENT)

GALVANIZED FITTING OPTIONS:
Ø1", 1 1/4", 1 1/2", 2". CUSTOM TANK FITTINGS CAN BE LOCATED ANYWHERE IN TANK

TOP ACCESS HOLE OPTIONS:
FLANGE ADAPTERS Ø24" OR Ø30"
PVC RISERS Ø24" OR Ø30"
LIDS CAN BE INSULATED OR NON INSULATED

EXCAVATION:
12" LARGER THAN TANK DIMENSIONS EACH WAY, MAX BURY DEPTH 3'-0"

REINFORCEMENT:

-TOP	#4 U-BARS @ 12" O.C.E.W.
-SIDES	#4 BAR @ 12" O.C.E.W.
-BASE	#4 U-BARS @ 12" O.C.E.W.



2215 E. BROOKLYN AVE
SPOKANE, WA 99217
TOLL FREE 1-800-888-4573
(509) 325-4573 FAX (509) 325-5098
SPOKANE - LEWISTON - YAKIMA
www.wilbertprecast.com

TITLE: 2500 GALLON 2-PIECE WATER TANK

SIZE	DWG. NO.	SCALE:	DATE:
B	#1707	NTS	10/28/2025