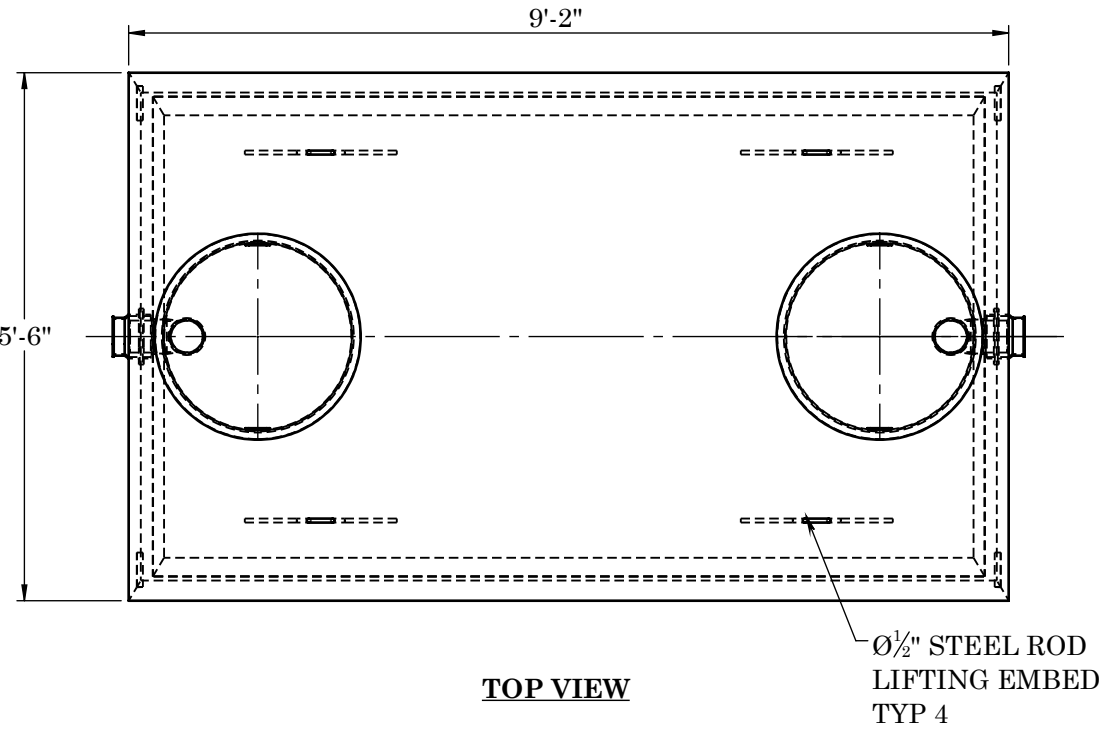
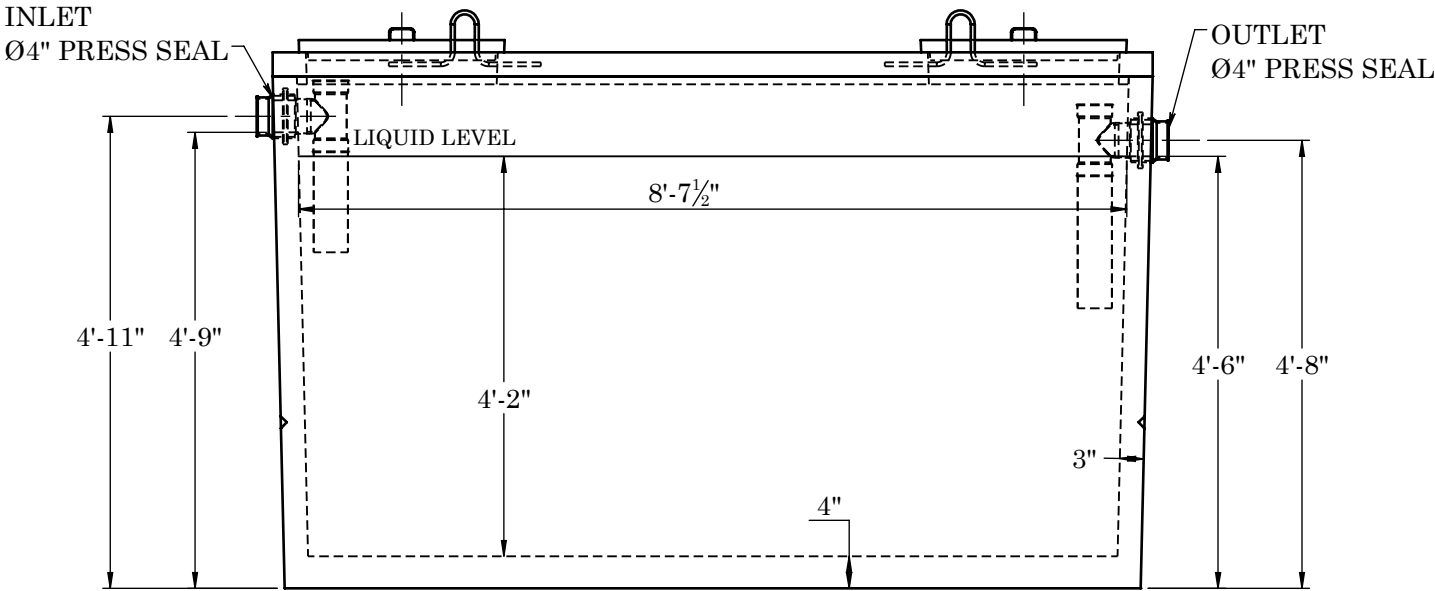
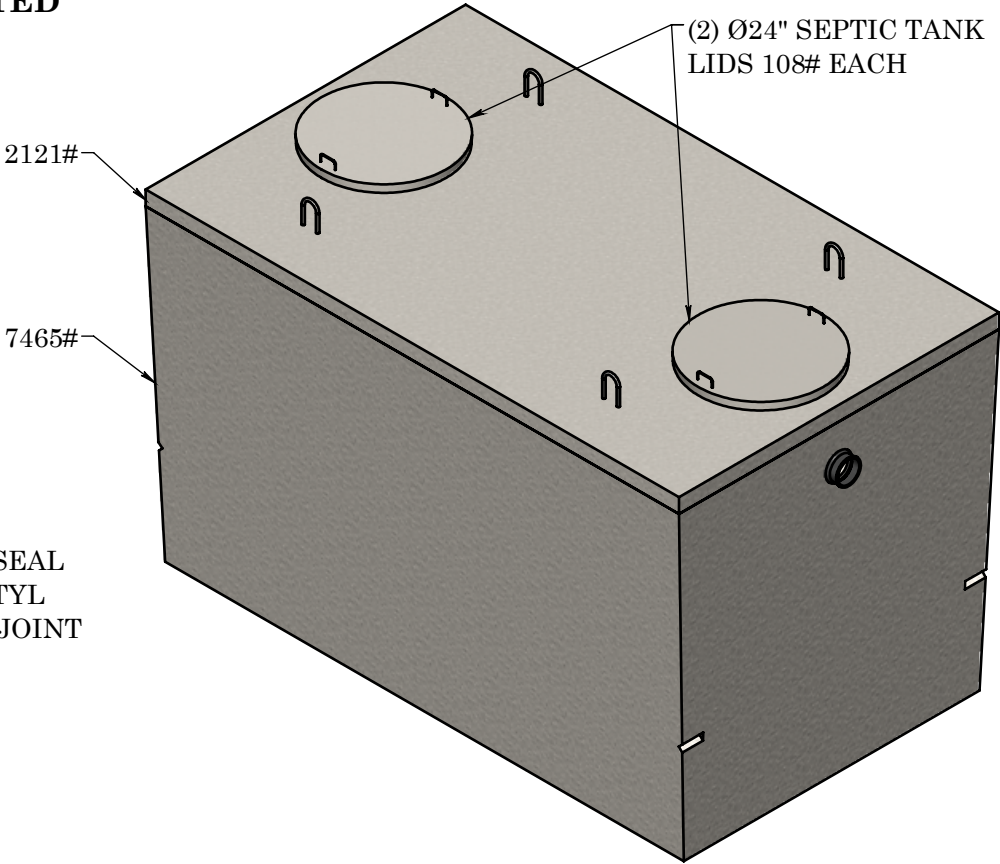
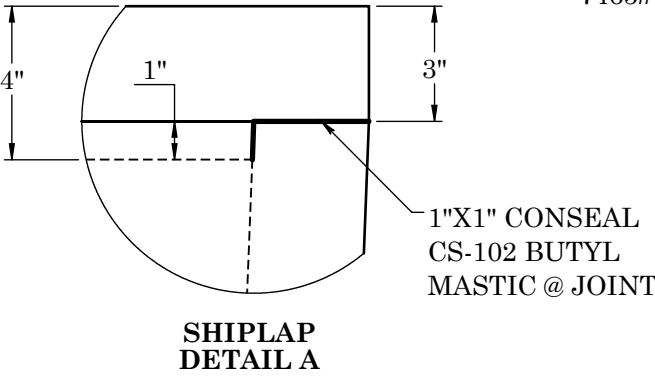


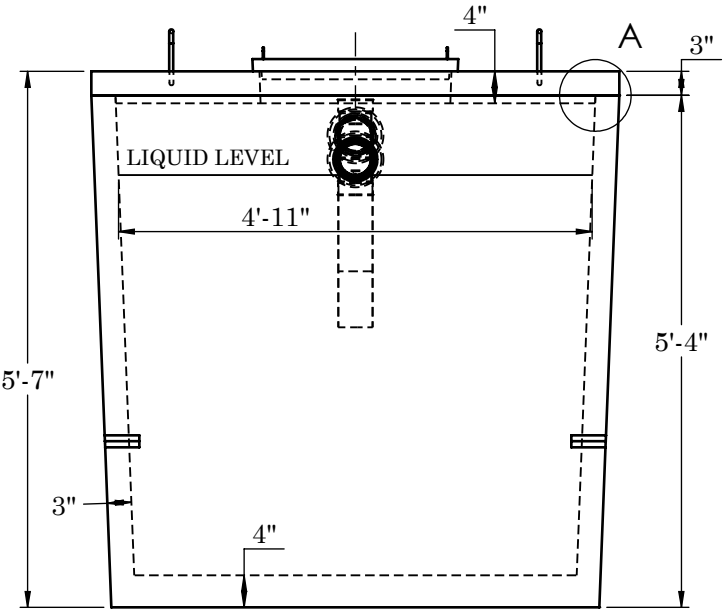
WARRANTY - ALL TANKS MUST BE BACKFILLED AND COMPACTED
PRIOR TO FILLING OR WARRANTY IS VOID



TOP VIEW



FRONT VIEW



SIDE VIEW

CONCRETE:
TANK CONSTRUCTION UTILIZES 6000 PSI
CONCRETE AND GRADE 60 REBAR

GALLON CALCS:
4'-11"W X 8'-7½"L X 4'-2"H X 7.48 = 1322 GALLONS

RISERS:
PVC: Ø24" RISER AND FIBER COVER(TO GRADE)
CONCRETE: Ø24" X 8" OR 12" (6" BELOW GRADE)

BEDDING:
4" PEA GRAVEL (NO WATER PRESENT)

EXCAVATION:
12" LARGER THAN TANK DIMENSIONS
EACH WAY. MAX BURY 3'-0"

REINFORCEMENT:

- LID**
- #4 BAR @ 6" O.C.E.W.
 - (2) #4 BARS X CONT. EACH SIDE OF ACCESS
- WALLS & BASE**
- 6X6 10 GA. WIRE MESH IN
WALLS, 12" UP FROM BOTTOM
 - #3 L PERIMETER BARS 12" DOWN FROM TOP
OF BASE
 - 6X6 10 GA. WIRE MESH IN BASE



2215 E. BROOKLYN AVE
SPOKANE, WA 99217
TOLL FREE 1-800-888-4573
(509) 325-4573 FAX (509) 325-5098
SPOKANE - LEWISTON - YAKIMA
www.wilbertprecast.com

TITLE:
1250 GALLON SINGLE COMPARTMENT
MONO SEPTIC TANK

SIZE	DWG. NO.	SCALE:	DATE:
B	#1630MS	NTS	12/5/2025