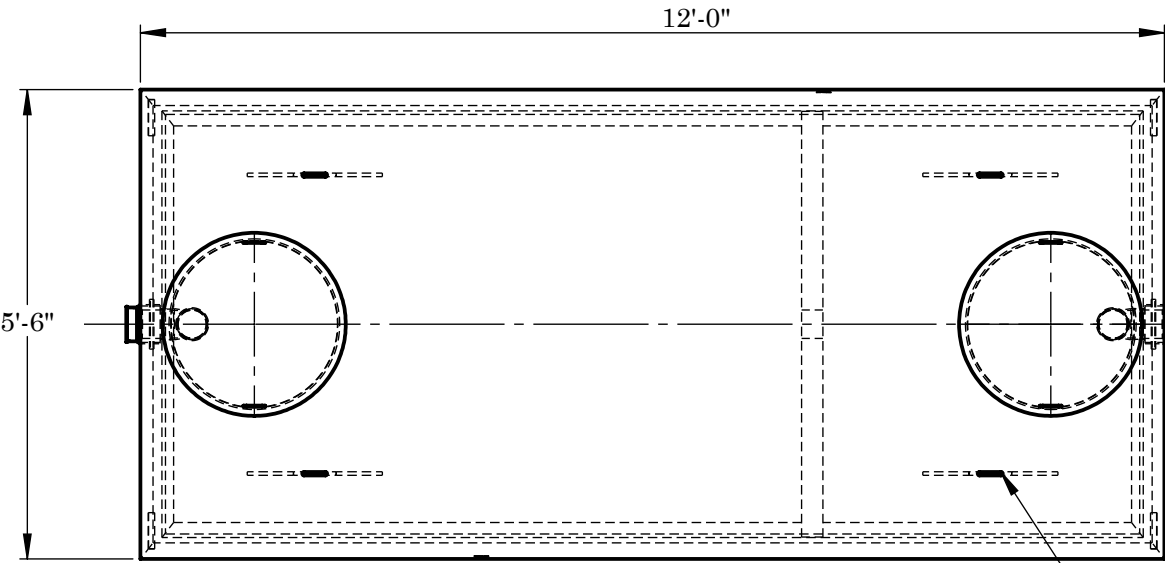
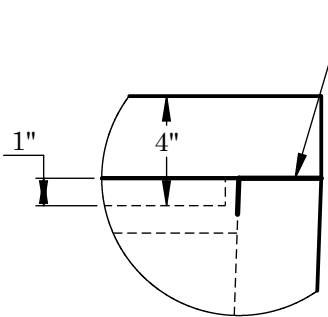


*WARRANTY - ALL TANKS MUST BE BACKFILLED AND COMPACTED PRIOR TO FILLING OR WARRANTY IS VOID.

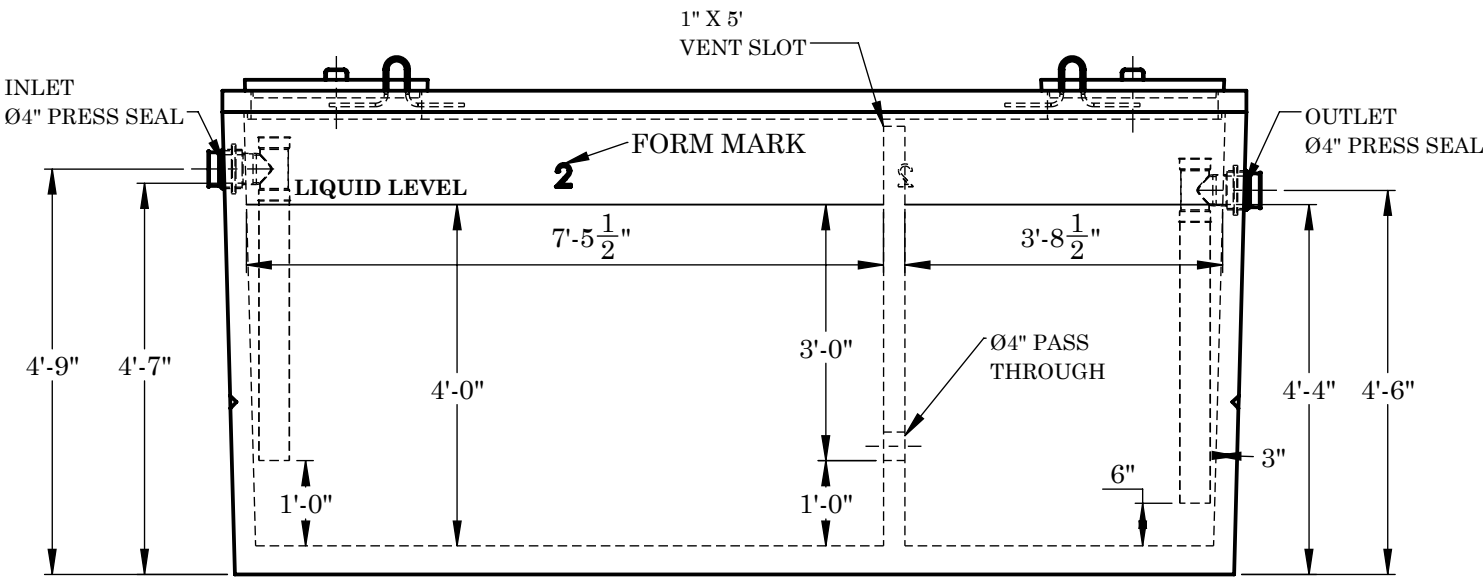
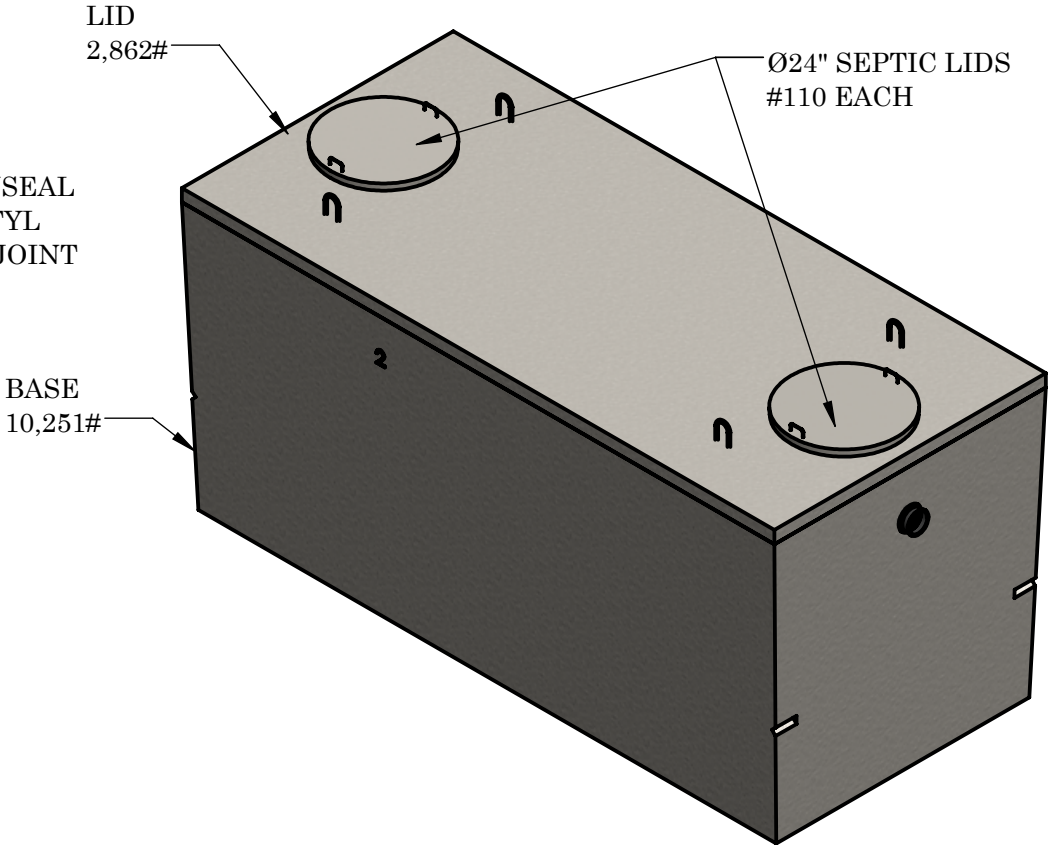


TOP VIEW

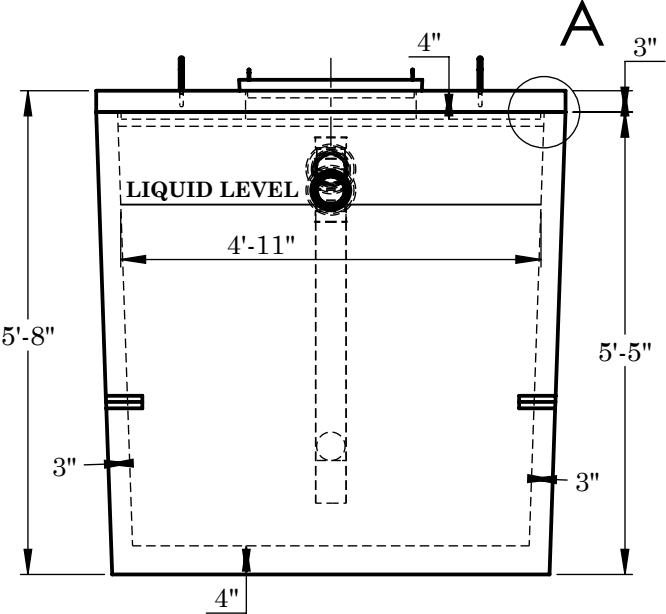
(4) 1½" STEEL ROD LIFTING EMBEDS



JOINT DETAIL A



FRONT VIEW



SIDE VIEW

CONCRETE:
TANK CONSTRUCTION UTILIZES 4000 PSI CONCRETE AND GRADE 60 REBAR.

GALLON CALCS:
4'-11"W x 7'-5½"L x 4'-0"H x 7.48= 1097 GALLONS
4'-11"W x 3'-8½"L x 4'-0"H x 7.48= 546 GALLONS

RISERS:
PVC: Ø24" & FIBER COVER (TO GRADE)
CONCRETE: Ø24" x 8" OR 12" (6" BELOW GRADE)

BEDDING:
4" PEA GRAVEL (NO WATER PRESENT)

EXCAVATION:
12" LARGER EACH WAY THAN TANK DIM.
MAX COVER ON TOP 3'-0"

REINFORCEMENT:

- #4 BARS @ 6" O.C.E.W. IN TOP, (2) #4 EACH SIDE OF ACCESS
- 6x6 10 GA WIRE MESH IN SIDES UP 12" FROM BOTTOM
- 6x6 10 GA WIRE MESH IN BOTTOM
- #3 BAR 12" DOWN FROM TOP
HORIZONTAL CONTINUOUS LOOP



2215 E. BROOKLYN AVE
SPOKANE, WA 99217
TOLL FREE 1-800-888-4573
(509) 325-4573 FAX (509) 325-5098
SPOKANE - LEWISTON - YAKIMA
www.wilbertprecast.com

DRAWN BY:
TH

TITLE:

1500 GALLON OIL WATER SEPARATOR
MONO DOUBLE COMPARTMENT

SIZE

B

DWG. NO.

#1634MOW 4"

SCALE:

NTS

DATE:

11/19/2025