

WARRANTY: ALL TANKS MUST BE BACKFILLED AND COMPACTED  
PRIOR TO FILLING OR WARRANTY IS VOID

D

C

B

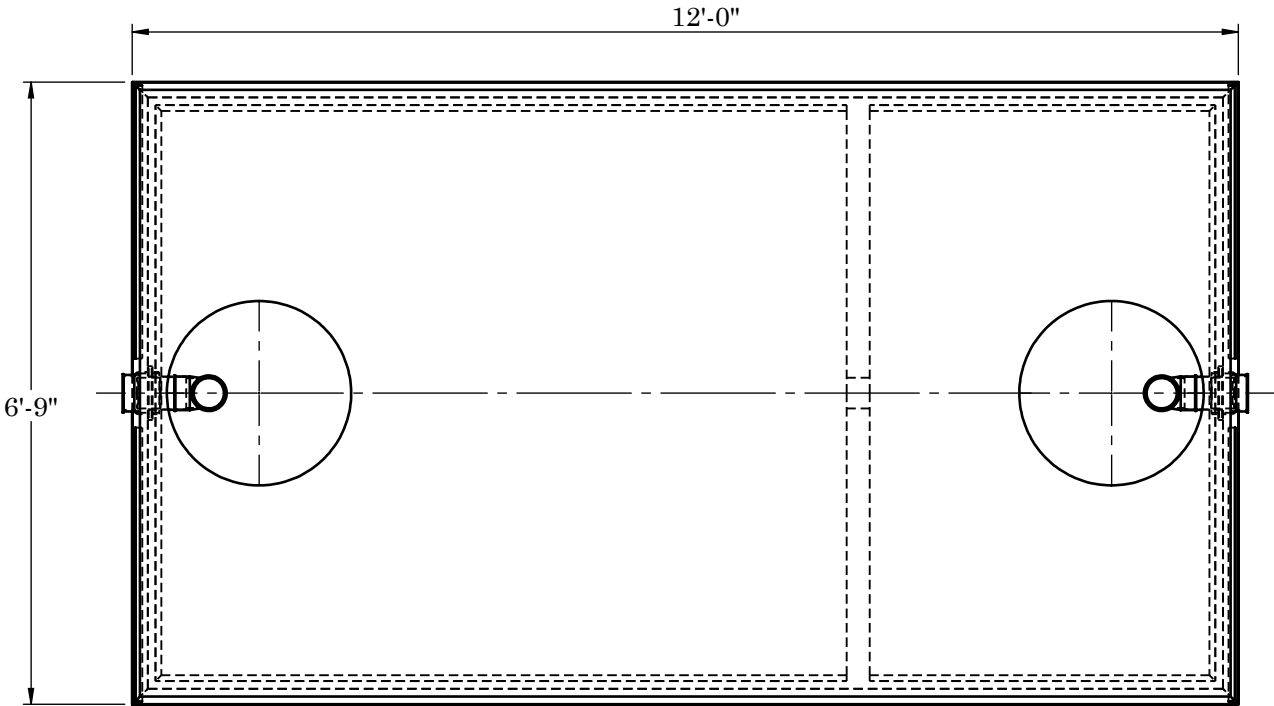
A

D

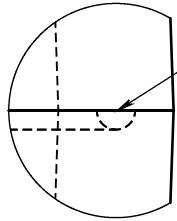
C

B

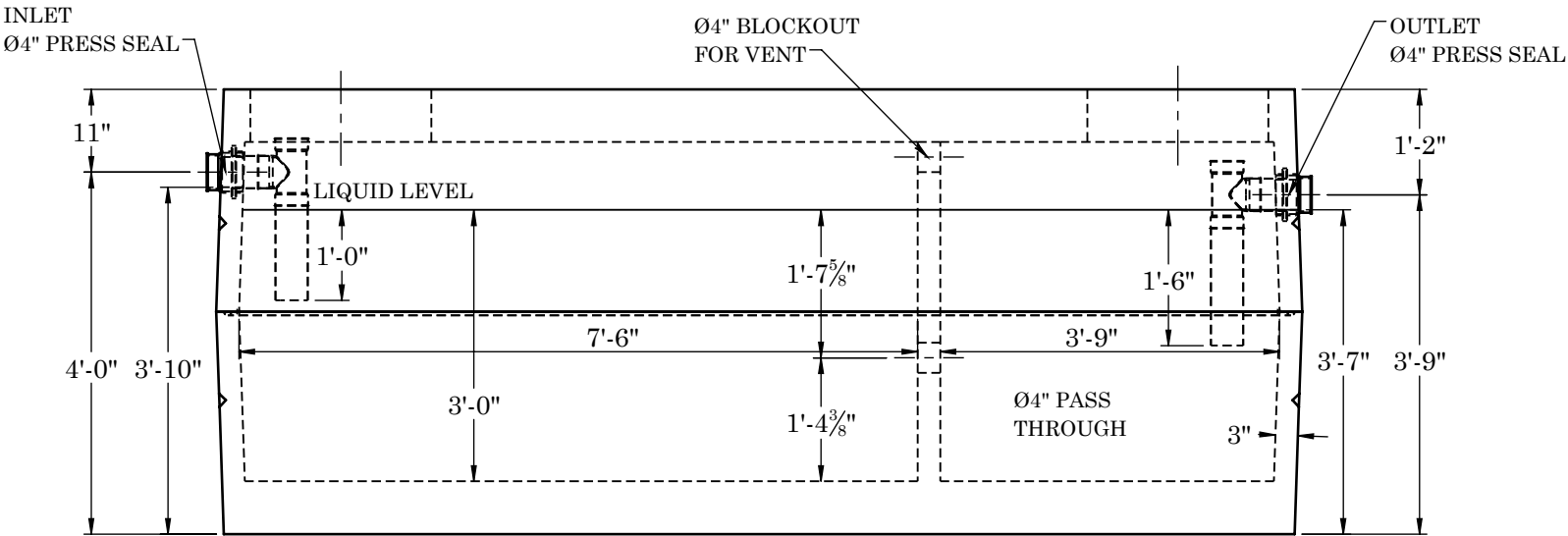
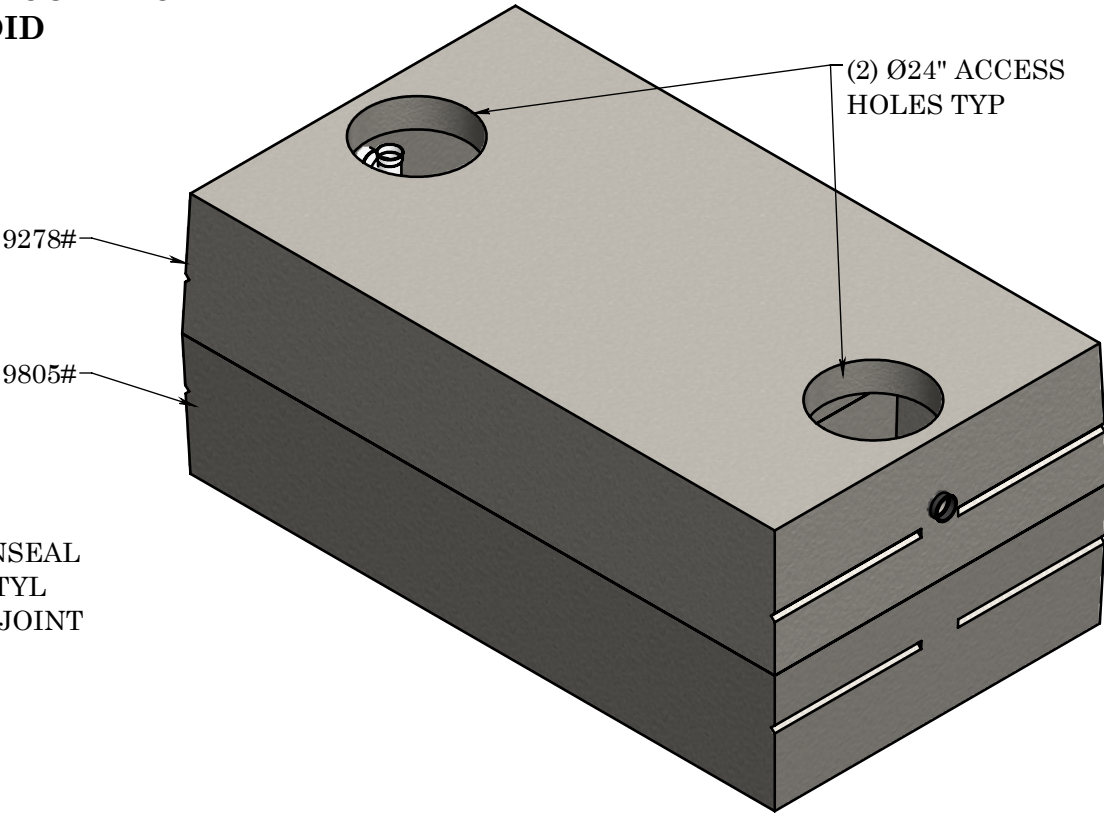
A



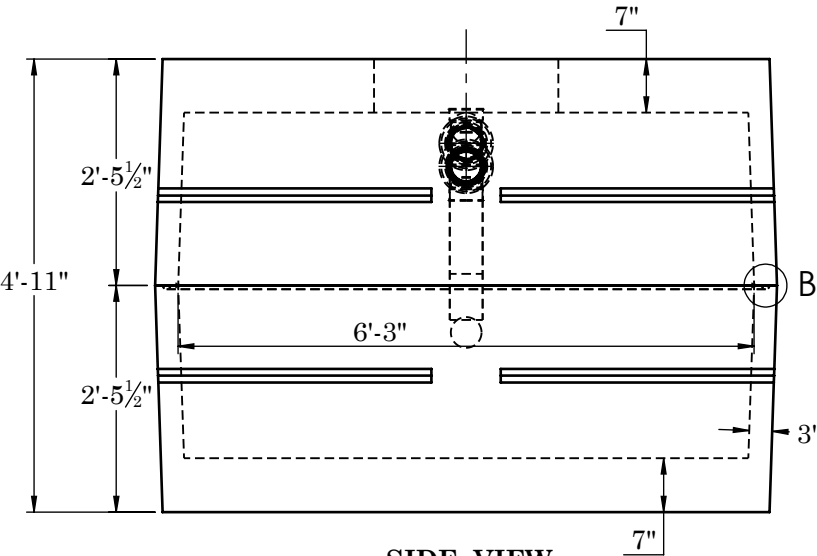
TOP VIEW



JOINT DETAIL B



FRONT VIEW



SIDE VIEW

**CONCRETE:**  
TANK CONSTRUCTION UTILIZES 6000 PSI  
CONCRETE AND GRADE 60 REBAR

**GALLON CALCS:**  
6'-3"W X 7'-6"L X 3'-0"H X 7.48 = 1052 GALLONS  
6'-3"W X 3'-9"L X 3'-0"H X 7.48 = 526 GALLONS

**RISERS:**  
PVC: Ø24" AND FIBER COVER (TO GRADE)  
CONCRETE: Ø24" X 8" OR 12" (6" BELOW GRADE)

**BEDDING:**  
4" PEA GRAVEL (NO WATER PRESENT)

**EXCAVATION:**  
12" LARGER THAN TANK DIMENSIONS  
EACH WAY, MAX BURY DEPTH 5'-0"

REINFORCEMENT:

- TOP  
#4 U-BARS @ 5" O.C.E.W.  
(2) #4 BARS EACH SIDE OF ACCESS
- SIDES  
#4 BAR @ 5" O.C. HORIZONTAL
- BASE  
#4 U-BARS @ 5" O.C.E.W.



2215 E. BROOKLYN AVE  
SPOKANE, WA 99217  
TOLL FREE 1-800-888-4573  
(509) 325-4573 FAX (509) 325-5098  
SPOKANE - LEWISTON - YAKIMA  
www.wilbertprecast.com

TITLE:  
1500 GALLON DOUBLE COMPARTMENT  
2-PIECE SEPTIC TANK - LOW PROFILE HEAVY

SIZE	DWG. NO.	SCALE:	DATE:
B	#1634TB	NTS	12/8/2025