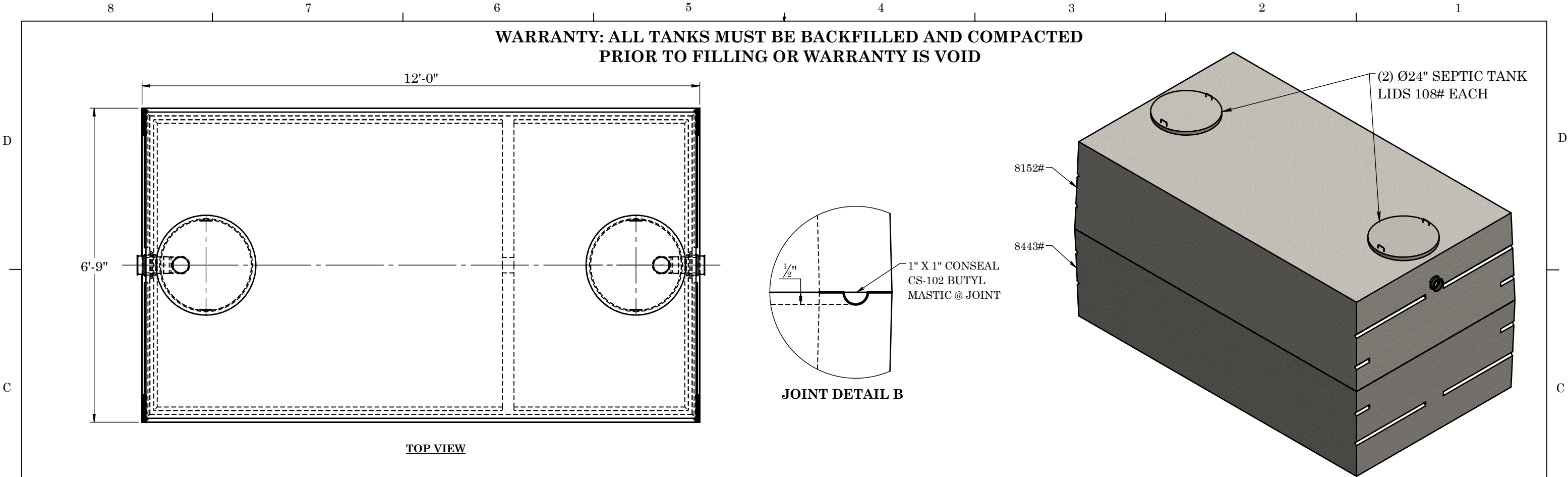
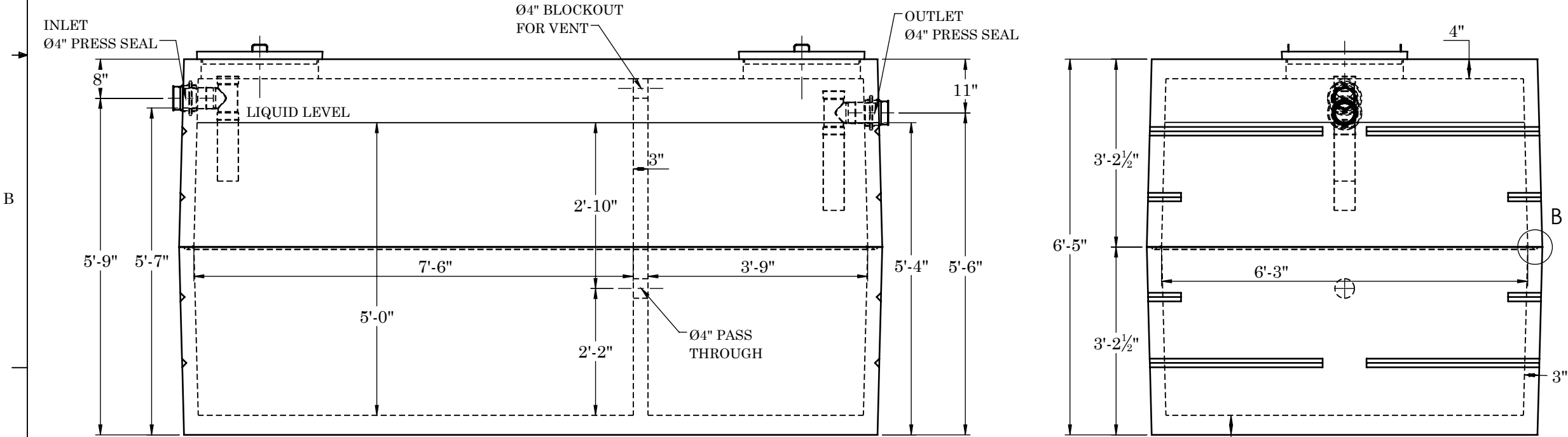


WARRANTY: ALL TANKS MUST BE BACKFILLED AND COMPACTED  
PRIOR TO FILLING OR WARRANTY IS VOID



TOP VIEW



FRONT VIEW

SIDE VIEW

**CONCRETE:**  
TANK CONSTRUCTION UTILIZES 6000 PSI  
CONCRETE AND GRADE 60 REBAR

**GALLON CALCS:**  
6'-3"W X 7'-6"L X 5'-0"H X 7.48 = 1753 GALLONS  
6'-3"W X 3'-9"L X 5'-0"H X 7.48 = 877 GALLONS

**RISERS:**  
PVC: Ø24" AND FIBER COVER (TO GRADE)  
CONCRETE: Ø24" X 8" OR 12" (6" BELOW GRADE)

**BEDDING:**  
4" PEA GRAVEL (NO WATER PRESENT)

**EXCAVATION:**  
12" LARGER THAN TANK DIMENSIONS  
EACH WAY, MAX BURY DEPTH 3'-0"

REINFORCEMENT:		 <div>2215 E. BROOKLYN AVE SPOKANE, WA 99217 TOLL FREE 1-800-888-4573 (509) 325-4573 FAX (509) 325-5098 SPOKANE - LEWISTON - YAKIMA www.wilbertprecast.com</div>		TITLE: 2500 GALLON DOUBLE COMPARTMENT 2-PIECE SEPTIC TANK	
-TOP	#4 U-BARS @ 6" O.C.E.W. (2) #4 BARS EACH SIDE OF ACCESS			SIZE B	DWG. NO. #1641
-SIDES	#4 BAR @ 6" O.C. HORIZONTAL			SCALE: NTS	DATE: 12/8/2025
-BASE	#4 U-BARS @ 6" O.C.E.W.				